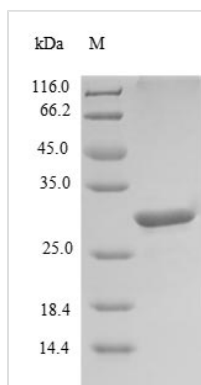




# Recombinant Human Leukocyte cell-derived chemotaxin 1 (LECT1), partial

<b>Product Code</b>	CSB-EP012854HU1
<b>Relevance</b>	Bifunctional growth regulator that stimulates the growth of cultured chondrocytes in the presence of basic fibroblast growth factor (FGF) but inhibits the growth of cultured vascular endothelial cells. May contribute to the rapid growth of cartilage and vascular invasion prior to the replacement of cartilage by bone during endochondral bone development. Inhibits in vitro tube formation and mobilization of endothelial cells. Plays a role as antiangiogenic factor in cardiac valves to suppress neovascularization.
<b>Abbreviation</b>	Recombinant Human LECT1 protein, partial
<b>Storage</b>	The shelf life is related to many factors, storage state, buffer ingredients, storage temperature and the stability of the protein itself. Generally, the shelf life of liquid form is 6 months at -20°C/-80°C. The shelf life of lyophilized form is 12 months at -20°C/-80°C.
<b>Uniprot No.</b>	O75829
<b>Alias</b>	Cleaved into the following 2 chains: Chondrosurfactant protein Short name: CH-SP Chondromodulin-1 Alternative name(s): Chondromodulin-I Short name: ChM-I
<b>Product Type</b>	Recombinant Protein
<b>Immunogen Species</b>	Homo sapiens (Human)
<b>Purity</b>	Greater than 90% as determined by SDS-PAGE.
<b>Sequence</b>	EVVRKIVPTTTTKRPHSGPRSNPGAGRLNNETRPSVQEDSQAFNPDNPYHQQE GESMTFDPRLDHEGICCECRSYTHCQKICEPLGGYYPWPYNYQGCRSACR VIMPCSWWVARILGMV
<b>Research Area</b>	Cancer
<b>Source</b>	E.coli
<b>Target Names</b>	CNMD
<b>Expression Region</b>	215-334aa
<b>Notes</b>	Repeated freezing and thawing is not recommended. Store working aliquots at 4°C for up to one week.
<b>Tag Info</b>	N-terminal 6xHis-SUMO-tagged
<b>Mol. Weight</b>	29.8kDa
<b>Protein Length</b>	Partial
<b>Image</b>	



(Tris-Glycine gel) Discontinuous SDS-PAGE (reduced) with 5% enrichment gel and 15% separation gel.

### Reconstitution

We recommend that this vial be briefly centrifuged prior to opening to bring the contents to the bottom. Please reconstitute protein in deionized sterile water to a concentration of 0.1-1.0 mg/mL. We recommend to add 5-50% of glycerol (final concentration) and aliquot for long-term storage at -20°C/-80°C. Our default final concentration of glycerol is 50%. Customers could use it as reference.

### Shelf Life

The shelf life is related to many factors, storage state, buffer ingredients, storage temperature and the stability of the protein itself. Generally, the shelf life of liquid form is 6 months at -20°C/-80°C. The shelf life of lyophilized form is 12 months at -20°C/-80°C.