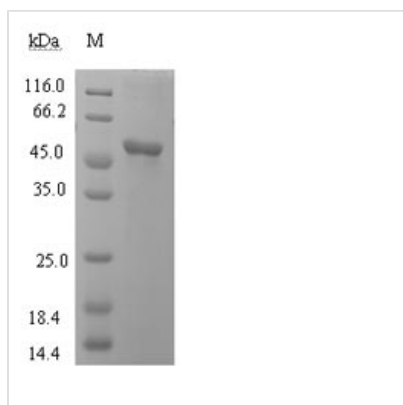




Recombinant Human L-lactate dehydrogenase C chain (LDHC), partial

Product Code	CSB-EP012844HU
Relevance	Possible role in sperm motility. (S)-lactate + NAD ⁺ = pyruvate + NADH.
Abbreviation	Recombinant Human LDHC protein
Storage	The shelf life is related to many factors, storage state, buffer ingredients, storage temperature and the stability of the protein itself. Generally, the shelf life of liquid form is 6 months at -20°C/-80°C. The shelf life of lyophilized form is 12 months at -20°C/-80°C.
Uniprot No.	P07864
Product Type	Recombinant Proteins
Immunogen Species	Homo sapiens (Human)
Purity	Greater than 90% as determined by SDS-PAGE.
Sequence	STVKEQLIEKLIEDDENSQCKITIVGTGAVGMACAISILLKDLADELALVDVALDK LK GEMMDLQHGS LFFSTSKITSGKDYSVSANSRIVIVTAGARQQEGETRLALV QRNVAIMKSIIPAIVHYSPDCKILVVSNPVDILTYIVWKISGLPVTRVIGSGCNLDS ARFRYLIGEKLGVHPTSCHGWIIGEHDSSVPLWSGVNVAGVALKTLDPKLGT DSDKEHWKNIHKQVIQSAYEIIKLKGYTSAIGLSVMDLVGSILKNLRRVHPVST MVKGLYGIKEELFLSIPCVLGRNGVSDVVKINLNSEEEALFKSAETLWNIQKDL IF
Research Area	Cancer
Source	E.coli
Target Names	LDHC
Expression Region	2-332aa
Notes	Repeated freezing and thawing is not recommended. Store working aliquots at 4°C for up to one week.
Tag Info	N-terminal 6xHis-SUMO-tagged
Mol. Weight	52.2kDa
Protein Length	Partial
Image	



(Tris-Glycine gel) Discontinuous SDS-PAGE (reduced) with 5% enrichment gel and 15% separation gel.

Shelf Life

The shelf life is related to many factors, storage state, buffer ingredients, storage temperature and the stability of the protein itself. Generally, the shelf life of liquid form is 6 months at -20°C/-80°C. The shelf life of lyophilized form is 12 months at -20°C/-80°C.