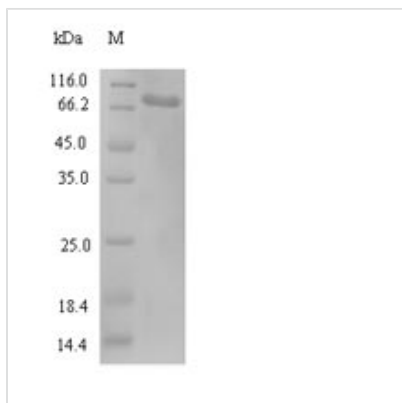




Recombinant Human Kinesin light chain 3 (KLC3)

Product Code	CSB-EP012381HU
Relevance	Kinesin is a microtubule-associated force-producing protein that may play a role in organelle transport.
Abbreviation	Recombinant Human KLC3 protein
Storage	The shelf life is related to many factors, storage state, buffer ingredients, storage temperature and the stability of the protein itself. Generally, the shelf life of liquid form is 6 months at -20°C/-80°C. The shelf life of lyophilized form is 12 months at -20°C/-80°C.
Uniprot No.	Q6P597
Alias	KLC2-like kinesin light chain 2
Product Type	Recombinant Protein
Immunogen Species	Homo sapiens (Human)
Purity	Greater than 90% as determined by SDS-PAGE.
Sequence	MSVQVAAPGSAGLGPERLSPEELVRQTRQVVQGLEALRAEHHGLAGHLAEAL AGQGPAAGLEMLEEKQQVVSLSLEAIELGLGEAQVLLALSAHVGAEAEKQRL RSQARRLAQENVWLREELEETQRRRLRASEESVAQLEEEKRLHLEFLGQLRQYD PPAESQQSESPPRRDSLASFPEEEEEERKGPEAAGAAAAQQGGYEIPARLRT LHNLVIQYAGQGGRYEVAVPLCRQALEDLERSSSGHCHPDVATMLNILALVYRDQ NKYKEATDLLHDALQIREQTLGPEHPAVAATLNNLAVLYGKRGYREAEPLCQ RALEIREKVLGADHPDVAKQLNNLALLCQNQGKFEDVERHYARALSIEALGG PHDPNVAKTKNNLASAYLKQNKYQQAEEELYKEILHKEDLPAPLGAPNTGTAGD AEQALRRSSSLSKIRESIRRGSEKLVSRRLRGEAAAGAAGMKRAMSLNTLNDA PRAPGTQFPSWHLDKAPRTLSASTQDLSPH
Research Area	Signal Transduction
Source	E.coli
Target Names	KLC3
Expression Region	1-504aa
Notes	Repeated freezing and thawing is not recommended. Store working aliquots at 4°C for up to one week.
Tag Info	N-terminal 6xHis-SUMO-tagged
Mol. Weight	71.4kDa
Protein Length	Full Length
Image	



(Tris-Glycine gel) Discontinuous SDS-PAGE (reduced) with 5% enrichment gel and 15% separation gel.

Reconstitution

We recommend that this vial be briefly centrifuged prior to opening to bring the contents to the bottom. Please reconstitute protein in deionized sterile water to a concentration of 0.1-1.0 mg/mL. We recommend to add 5-50% of glycerol (final concentration) and aliquot for long-term storage at -20°C/-80°C. Our default final concentration of glycerol is 50%. Customers could use it as reference.

Shelf Life

The shelf life is related to many factors, storage state, buffer ingredients, storage temperature and the stability of the protein itself. Generally, the shelf life of liquid form is 6 months at -20°C/-80°C. The shelf life of lyophilized form is 12 months at -20°C/-80°C.