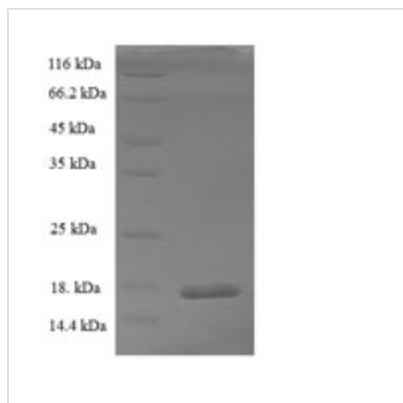




# Recombinant Rat Potassium voltage-gated channel subfamily E member 2 (Kcne2)

<b>Product Code</b>	CSB-EP012027RA
<b>Relevance</b>	Ancillary protein that assbles as a beta subunit with a voltage-gated potassium channel complex of pore-forming alpha subunits. Modulates the gating kinetics and enhances stability of the channel complex. Associated with KCNH2/HERG is proposed to form the rapidly activating component of the delayed rectifying potassium current in heart (IKr). May associate with KCNQ2 and/or KCNQ3 and modulate the native M-type current. May associate with KCNQ1/KCLQT1 and elicit a voltage-independent current .
<b>Abbreviation</b>	Recombinant Rat Kcne2 protein
<b>Storage</b>	The shelf life is related to many factors, storage state, buffer ingredients, storage temperature and the stability of the protein itself. Generally, the shelf life of liquid form is 6 months at -20°C/-80°C. The shelf life of lyophilized form is 12 months at -20°C/-80°C.
<b>Uniprot No.</b>	P63161
<b>Alias</b>	MinK-related peptide 1Minimum potassium ion channel-related peptide 1;Potassium channel subunit beta MiRP1
<b>Product Type</b>	Recombinant Protein
<b>Immunogen Species</b>	Rattus norvegicus (Rat)
<b>Purity</b>	Greater than 90% as determined by SDS-PAGE.
<b>Sequence</b>	MTTLANLTQTLEDAFKKVFITYMDSWRRNTTAEQQALQARVDAENFYVILYL MVMIGMFAFIVVAILVSTVKSKRREHSQDPYHQYIVEDWQQKYRSQILHLEDSK ATIHENLGATGFTVSP
<b>Research Area</b>	Others
<b>Source</b>	E.coli
<b>Target Names</b>	Kcne2
<b>Expression Region</b>	1-123aa
<b>Notes</b>	Repeated freezing and thawing is not recommended. Store working aliquots at 4°C for up to one week.
<b>Tag Info</b>	N-terminal 6xHis-tagged
<b>Mol. Weight</b>	18.4kDa
<b>Protein Length</b>	Full Length
<b>Image</b>	



(Tris-Glycine gel) Discontinuous SDS-PAGE (reduced) with 5% enrichment gel and 15% separation gel.

### Reconstitution

We recommend that this vial be briefly centrifuged prior to opening to bring the contents to the bottom. Please reconstitute protein in deionized sterile water to a concentration of 0.1-1.0 mg/mL. We recommend to add 5-50% of glycerol (final concentration) and aliquot for long-term storage at -20°C/-80°C. Our default final concentration of glycerol is 50%. Customers could use it as reference.

### Shelf Life

The shelf life is related to many factors, storage state, buffer ingredients, storage temperature and the stability of the protein itself. Generally, the shelf life of liquid form is 6 months at -20°C/-80°C. The shelf life of lyophilized form is 12 months at -20°C/-80°C.