



# Recombinant Human Integrin beta-like protein 1 (ITGBL1)

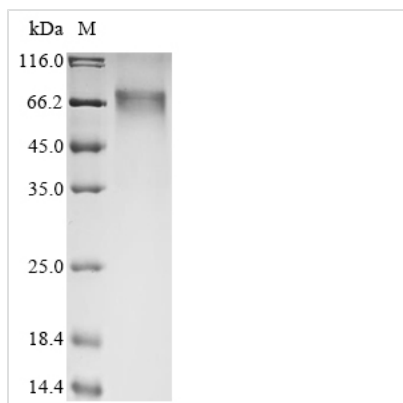
<b>Product Code</b>	CSB-EP011893HU
<b>Abbreviation</b>	Recombinant Human ITGBL1 protein
<b>Storage</b>	The shelf life is related to many factors, storage state, buffer ingredients, storage temperature and the stability of the protein itself. Generally, the shelf life of liquid form is 6 months at -20°C/-80°C. The shelf life of lyophilized form is 12 months at -20°C/-80°C.
<b>Uniprot No.</b>	O95965
<b>Form</b>	Liquid or Lyophilized powder
<b>Storage Buffer</b>	If the delivery form is liquid, the default storage buffer is Tris/PBS-based buffer, 5%-50% glycerol. If the delivery form is lyophilized powder, the buffer before lyophilization is Tris/PBS-based buffer, 6% Trehalose.
<b>Product Type</b>	Recombinant Proteins
<b>Immunogen Species</b>	Homo sapiens (Human)
<b>Purity</b>	Greater than 90% as determined by SDS-PAGE.
<b>Sequence</b>	VPQSFSPSLRSWPGAACRLSRAESERRCRAPGQPPGAALCHGRGRCDGVC CICHVTEPGMFFGPLCECHEWVCETYDGSTCAGHGKCDGKCKCDQGWWY DACQYPTNCDLTKKKSNQMCKNSQDIICSNAGTCHCGRCKCDNSDGSGLVY GKFCECDDRECIDDDETEEICGGHKGKCYCGNCKAGWHGDKCEFQCDITPW ESKRRCTSPDGKICSNRGTCVCGECTCHDVPDPTGDWGDHGDTCEDERDC RAVYDRYSDDFCSGHGQCNCGRCDCKAGWYGKKCEHPQSCTLSAEESIRKC QGSSDLPCSGRGKCECGKCTCYPPGDRRVYGKTCECDDRRCDLDGVVCG GHGTCSCGRVCERGWFGKLCQHPKCNMTEEQSKNLCEADGILCSGKGS CHCGKICSAEEWYISGEFCDCDDRDCDKHDGLICTGNGICSCGNCECWDG WNGNACEIWLGSSEYP
<b>Research Area</b>	Others
<b>Source</b>	E.coli
<b>Target Names</b>	ITGBL1
<b>Protein Names</b>	Recommended name: Integrin beta-like protein 1 Alternative name(s): Osteoblast-specific cysteine-rich protein Ten integrin EGF-like repeat domain-containing protein
<b>Expression Region</b>	24-494aa
<b>Notes</b>	Repeated freezing and thawing is not recommended. Store working aliquots at 4°C for up to one week.
<b>Tag Info</b>	N-terminal 10xHis-tagged and C-terminal Myc-tagged
<b>Mol. Weight</b>	58.9 kDa



## Protein Length

## Full Length of Mature Protein

### Image



(Tris-Glycine gel) Discontinuous SDS-PAGE (reduced) with 5% enrichment gel and 15% separation gel.

### Description

A cDNA sequence coding for integrin beta-like protein 1 (ITGBL1) was inserted a 10xHis-tag at the N-terminus ? a Myc-tag at the C-terminus and then expressed in E.coli. The product is a full-length of mature protein consisting of 24-494AA of human ITGBL1. It has a calculated molecular weight of 58.9 kDa. And it got over 90% in purity determined by SDS-PAGE. This recombinant ITGBL1 protein is in-stock now.

ITGBL1 is a  $\beta$ -integrin-related extracellular matrix (ECM) protein and involved in the development and metastasis of many tumors. Studies showed that ITGBL1 could promote bone metastasis of breast cancer through the TGF- $\beta$  signaling pathway. It also stimulated the invasion of ovarian cancer cells via Wnt/planar cell polarity (PCP) signaling and focal adhesion kinase (FAK)/Src pathway. High expression of ITGBL1 was related to the poor prognosis and drug resistance of ovarian cancer.

### Reconstitution

We recommend that this vial be briefly centrifuged prior to opening to bring the contents to the bottom. Please reconstitute protein in deionized sterile water to a concentration of 0.1-1.0 mg/mL. We recommend to add 5-50% of glycerol (final concentration) and aliquot for long-term storage at -20°C/-80°C. Our default final concentration of glycerol is 50%. Customers could use it as reference.

### Shelf Life

The shelf life is related to many factors, storage state, buffer ingredients, storage temperature and the stability of the protein itself. Generally, the shelf life of liquid form is 6 months at -20°C/-80°C. The shelf life of lyophilized form is 12 months at -20°C/-80°C.