



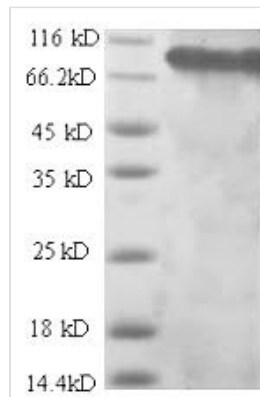
Recombinant Rat Integrin beta-1 (Itgb1), partial

Product Code	CSB-EP011880RA
Relevance	<p>Integrins alpha-1/beta-1, alpha-2/beta-1, alpha-10/beta-1 and alpha-11/beta-1 are receptors for collagen. Integrins alpha-1/beta-1 and alpha-2/beta-2 recognize the proline-hydroxylated sequence G-F-P-G-E-R in collagen. Integrins alpha-2/beta-1, alpha-3/beta-1, alpha-4/beta-1, alpha-5/beta-1, alpha-8/beta-1, alpha-10/beta-1, alpha-11/beta-1 and alpha-V/beta-1 are receptors for fibronectin. Alpha-4/beta-1 recognizes one or more domains within the alternatively spliced CS-1 and CS-5 regions of fibronectin. Integrin alpha-5/beta-1 is a receptor for fibrinogen. Integrin alpha-1/beta-1, alpha-2/beta-1, alpha-6/beta-1 and alpha-7/beta-1 are receptors for laminin. Integrin alpha-4/beta-1 is a receptor for VCAM1 and recognizes the sequence Q-I-D-S in VCAM1. Integrin alpha-9/beta-1 is a receptor for VCAM1, cytotactin and osteopontin. It recognizes the sequence A-E-I-D-G-I-E-L in cytotactin. Integrin alpha-3/beta-1 is a receptor for epiligrin, thrombospondin and CSPG4. Integrin alpha-3/beta-1 provides a docking site for FAP (seprase) at invadopodia plasma mbranes in a collagen-dependent manner and hence may participate in the adhesion, formation of invadopodia and matrix degradation processes, promoting cell invasion. Alpha-3/beta-1 may mediate with LGALS3 the stimulation by CSPG4 of endothelial cells migration. Integrin alpha-V/beta-1 is a receptor for vitronectin. Beta-1 integrins recognize the sequence R-G-D in a wide array of ligands. When associated with alpha-7/beta-1 integrin, regulates cell adhesion and laminin matrix deposition. Involved in promoting endothelial cell motility and angiogenesis. Involved in osteoblast compaction through the fibronectin fibrillogenesis cell-mediated matrix assbly process and the formation of mineralized bone nodules. May be involved in up-regulation of the activity of kinases such as PKC via binding to KRT1. Together with KRT1 and GNB2L1, serves as a platform for SRC activation or inactivation. Plays a mechanistic adhesive role during telophase, required for the successful completion of cytokinesis.</p>
Abbreviation	Recombinant Rat Itgb1 protein, partial
Storage	The shelf life is related to many factors, storage state, buffer ingredients, storage temperature and the stability of the protein itself. Generally, the shelf life of liquid form is 6 months at -20°C/-80°C. The shelf life of lyophilized form is 12 months at -20°C/-80°C.
Uniprot No.	P49134
Alias	Beta oligodendroglia ;Beta OLFibronectin receptor subunit betaVLA-4 subunit beta; CD29
Product Type	Recombinant Protein
Immunogen Species	Rattus norvegicus (Rat)
Purity	Greater than 90% as determined by SDS-PAGE.
Sequence	QTDKNRCLKANAKSCGECIQAGPNCGWCTNTTFLQEGMPTSARCDDLEALKK KGCHPSDIENPRGSQTIKKNKNVTNRSGMAEKLRPEDITQIQPQQLLLKLRS



EPQKFTLKFKAEDYPIDLYYLMDSL SYS MKDDLENV KSLGTDLMNEMRRITSD
FRIGFGSFVEKTVMPYISTTPAKLRNPCTSEQNCTSPFSYKNVLSLTDRGEFFN
ELVGQQRISGNLDSPEGGFDAIMQVAVCGSLIGWRNVTRLLVFSTDAGFHFAG
DGKLGGIVLPNDGQCHLENNVYTMSHYDYPSIAHLVQKLSENNITIFAVTEE
FQPVYKELKNLIPKSAVGTLSGNSSNVIQLIIDAYNSLSSEVILENSKLPDGVNTIN
YKSYCKNGVNGTGENGRCNSNISIGDEVQFEISITANKCPNKESENQLKLNPLG
FTEEEVVLQFICKCNCQSHGIPASPKCHEGNGTFECGACRCNEGRVGRHCE
CSTDEVNSEDMDAYCRKENSSEICSNNGECVCGQCVCRKRENTNEIYSGKFC
ECDNFNCDRSNGLICGGNGVCRRCRVCECYPNYTGSACDCSLDTPCVATNG
QICNGRGICECGACKCTDPKFQGPCTCETCQTCCLGVCAEHKECVQCRAFNGKE
KKDTCAQECSHFNLTKVESREKLPQPVQVDPVTHCKEKDIDDCWFYFTYSVN
SKGEAHVHVETPDCPTGPD

Research Area	Others
Source	E.coli
Target Names	Itgb1
Expression Region	21-729aa
Notes	Repeated freezing and thawing is not recommended. Store working aliquots at 4°C for up to one week.
Tag Info	N-terminal 6xHis-SUMO-tagged
Mol. Weight	94.4kDa
Protein Length	Extracellular Domain

Image


(Tris-Glycine gel) Discontinuous SDS-PAGE (reduced) with 5% enrichment gel and 15% separation gel.

Reconstitution	We recommend that this vial be briefly centrifuged prior to opening to bring the contents to the bottom. Please reconstitute protein in deionized sterile water to a concentration of 0.1-1.0 mg/mL. We recommend to add 5-50% of glycerol (final concentration) and aliquot for long-term storage at -20°C/-80°C. Our default final concentration of glycerol is 50%. Customers could use it as reference.
Shelf Life	The shelf life is related to many factors, storage state, buffer ingredients, storage temperature and the stability of the protein itself. Generally, the shelf life of liquid form is 6 months at -20°C/-80°C. The shelf life of lyophilized form is 12 months at -20°C/-80°C.