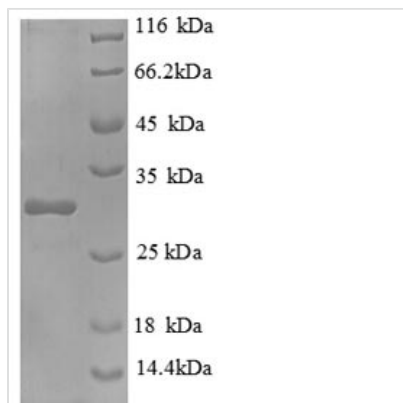


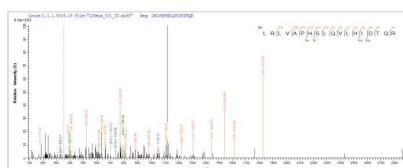


Recombinant Mouse Interleukin-2 receptor subunit beta (Il2rb), partial

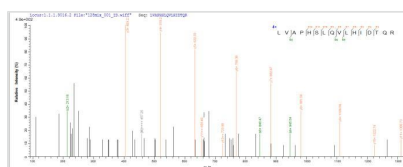
Product Code	CSB-EP011650MO1
Relevance	Receptor for interleukin-2. This beta subunit is involved in receptor mediated endocytosis and transduces the mitogenic signals of IL2.
Abbreviation	Recombinant Mouse l2rb protein, partial
Storage	The shelf life is related to many factors, storage state, buffer ingredients, storage temperature and the stability of the protein itself. Generally, the shelf life of liquid form is 6 months at -20°C/-80°C. The shelf life of lyophilized form is 12 months at -20°C/-80°C.
Uniprot No.	P16297
Alias	High affinity IL-2 receptor subunit betap70-75; CD122
Product Type	Recombinant Protein
Immunogen Species	Mus musculus (Mouse)
Purity	Greater than 90% as determined by SDS-PAGE.
Sequence	ASAAVKNCSHLECFYNSRANVSCMWSHEEALNVTTCVHAKSNLRHWNKTC ELTLVRQASWACNLILGSFPESQSLTSVDLLDINVCWEEKGWRRVKTCDFHP FDNLRLVAPHSLQVLHIDTQRCNISWKVSQVSHYIEPYLEFEARRRLLGHSWE DASVLSLKQRQQWLFLEMLIPSTSYEVQVRVKAQRNNTGTWSPWSQPLTFRT RPADPMKE
Research Area	Others
Source	E.coli
Target Names	l2rb
Expression Region	24-240aa
Notes	Repeated freezing and thawing is not recommended. Store working aliquots at 4°C for up to one week.
Tag Info	N-terminal 6xHis-tagged
Mol. Weight	29.0kDa
Protein Length	Extracellular Domain
Image	



(Tris-Glycine gel) Discontinuous SDS-PAGE (reduced) with 5% enrichment gel and 15% separation gel.



Based on the SEQUEST from database of E.coli host and target protein, the LC-MS/MS Analysis result of CSB-EP011650MO could indicate that this peptide derived from E.coli-expressed Mus musculus (Mouse) I2rb.



Based on the SEQUEST from database of E.coli host and target protein, the LC-MS/MS Analysis result of CSB-EP011650MO could indicate that this peptide derived from E.coli-expressed Mus musculus (Mouse) I2rb.

Description

Boost your research with our Recombinant Mouse I2rb, also known as Interleukin-2 receptor subunit beta. This E.coli-expressed protein plays a pivotal role in several biological investigations, including immune response studies and cellular signaling pathways.

Provided as a partial protein (24-240aa), our I2rb offers a focused exploration of its function and structure. The protein is expressed with a N-terminal 6xHis-tag, ensuring efficient purification and robust stability. Our Recombinant Mouse I2rb, with a purity of over 90% as determined by SDS-PAGE, adheres to the strict standards of scientific research. Choose between liquid form for immediate use or lyophilized powder for long-term storage, accommodating your research needs.

Reconstitution

We recommend that this vial be briefly centrifuged prior to opening to bring the contents to the bottom. Please reconstitute protein in deionized sterile water to a concentration of 0.1-1.0 mg/mL. We recommend to add 5-50% of glycerol (final concentration) and aliquot for long-term storage at -20°C/-80°C. Our default final concentration of glycerol is 50%. Customers could use it as reference.

Shelf Life

The shelf life is related to many factors, storage state, buffer ingredients, storage temperature and the stability of the protein itself. Generally, the shelf life of liquid form is 6 months at -20°C/-80°C. The shelf life of lyophilized form is 12 months at -20°C/-80°C.