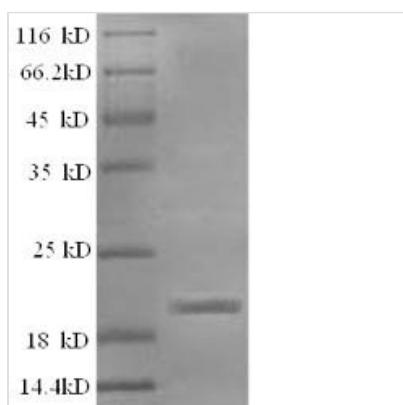




Recombinant Sheep Interleukin-1 beta (IL1B)

Product Code	CSB-EP011614SH
Relevance	Produced by activated macrophages, IL-1 stimulates thymocyte proliferation by inducing IL-2 release, B-cell maturation and proliferation, and fibroblast growth factor activity. IL-1 proteins are involved in the inflammatory response, being identified as endogenous pyrogens, and are reported to stimulate the release of prostaglandin and collagenase from synovial cells.
Abbreviation	Recombinant Sheep IL1B protein
Storage	The shelf life is related to many factors, storage state, buffer ingredients, storage temperature and the stability of the protein itself. Generally, the shelf life of liquid form is 6 months at -20°C/-80°C. The shelf life of lyophilized form is 12 months at -20°C/-80°C.
Uniprot No.	P21621
Product Type	Recombinant Protein
Immunogen Species	Ovis aries (Sheep)
Purity	Greater than 90% as determined by SDS-PAGE.
Sequence	AAVQSVKCKLQDREQKSLVLDSPCVLKALHLPSEQEMSREVVFCMSFVQGEER DNKIPVALGIRDKNLYLSCVKKGDTPTLQLEEVDPKVYPKRNMEKRFVFKTEI KNTVEFESVLYPNWYISTSQIEEKPVFLGRFRGGQDITDFRMETLSP
Research Area	Others
Source	E.coli
Target Names	IL1B
Expression Region	114-266aa
Notes	Repeated freezing and thawing is not recommended. Store working aliquots at 4°C for up to one week.
Tag Info	N-terminal 6xHis-tagged
Mol. Weight	21.7kDa
Protein Length	Full Length of Mature Protein

Image



(Tris-Glycine gel) Discontinuous SDS-PAGE (reduced) with 5% enrichment gel and 15% separation gel.



Reconstitution

We recommend that this vial be briefly centrifuged prior to opening to bring the contents to the bottom. Please reconstitute protein in deionized sterile water to a concentration of 0.1-1.0 mg/mL. We recommend to add 5-50% of glycerol (final concentration) and aliquot for long-term storage at -20°C/-80°C. Our default final concentration of glycerol is 50%. Customers could use it as reference.

Shelf Life

The shelf life is related to many factors, storage state, buffer ingredients, storage temperature and the stability of the protein itself. Generally, the shelf life of liquid form is 6 months at -20°C/-80°C. The shelf life of lyophilized form is 12 months at -20°C/-80°C.