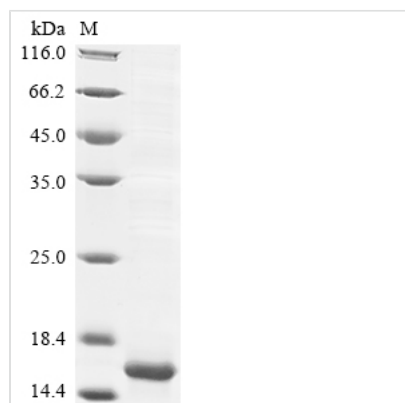




Recombinant Mouse Insulin-like growth factor II (Igf2)

Product Code	CSB-EP011088MO
Abbreviation	Recombinant Mouse Igf2 protein
Storage	The shelf life is related to many factors, storage state, buffer ingredients, storage temperature and the stability of the protein itself. Generally, the shelf life of liquid form is 6 months at -20°C/-80°C. The shelf life of lyophilized form is 12 months at -20°C/-80°C.
Uniprot No.	P09535
Product Type	Recombinant Proteins
Immunogen Species	Mus musculus(Mouse)
Purity	Greater than 85% as determined by SDS-PAGE.
Sequence	AYGPGETLCGGELVDTLQFVCSDRGFYFSRPSSRANRRSRGIVEECCFRSCD LALLETYCATPAKSE
Research Area	Signal Transduction
Source	E.coli
Target Names	Igf2
Protein Names	Recommended name: Insulin-like growth factor II Alternative name(s): IGF-II Multiplication-stimulating polypeptide Cleaved into the following 2 chains: 1. Insulin-like growth factor II 2. Preptin
Expression Region	25-91aa
Notes	Repeated freezing and thawing is not recommended. Store working aliquots at 4°C for up to one week.
Tag Info	N-terminal 6xHis-tagged
Mol. Weight	13.4 kDa
Protein Length	Full Length of Mature Protein

Image



(Tris-Glycine gel) Discontinuous SDS-PAGE (reduced) with 5% enrichment gel and 15% separation gel.



Description

Power up your signal transduction research with our Recombinant Mouse Igf2, also known as Insulin-like growth factor II. This protein, expressed in E.coli, is a crucial component in studies of growth regulation, cell survival, and cellular communication.

Our Igf2 is the full length of the mature protein (25-91aa), offering a complete representation of its structure and function. The protein is expressed with a N-terminal 6xHis-tag, ensuring efficient purification and optimal stability. With a purity exceeding 85% as determined by SDS-PAGE, our Recombinant Mouse Igf2 meets the highest standards for precision in scientific research. Choose between a liquid form for immediate experimentation or a lyophilized powder for extended stability, tailoring your research to new heights.

Shelf Life

The shelf life is related to many factors, storage state, buffer ingredients, storage temperature and the stability of the protein itself.

Generally, the shelf life of liquid form is 6 months at -20°C/-80°C. The shelf life of lyophilized form is 12 months at -20°C/-80°C.