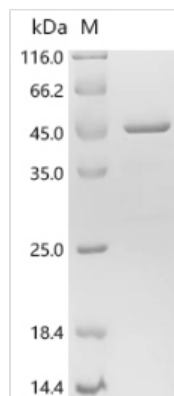




Recombinant Human Interferon alpha-14 (IFNA14)

Product Code	CSB-EP011035HUe0
Relevance	Produced by macrophages, IFN-alpha have antiviral activities. Interferon stimulates the production of two enzymes: a protein kinase and an oligoadenylate synthetase.
Abbreviation	Recombinant Human IFNA14 protein
Storage	The shelf life is related to many factors, storage state, buffer ingredients, storage temperature and the stability of the protein itself. Generally, the shelf life of liquid form is 6 months at -20°C/-80°C. The shelf life of lyophilized form is 12 months at -20°C/-80°C.
Uniprot No.	P01570
Alias	Interferon alpha-H ;LeIF HInterferon lambda-2-H
Product Type	Recombinant Protein
Immunogen Species	Homo sapiens (Human)
Purity	Greater than 90% as determined by SDS-PAGE.
Sequence	CNLSQTHSLNNRRTLMLMAQMRRISPFSCLKDRHDFEFPQEEFDGNQFQKAQ AISVLHEMMQQTFNLFSTKNSSAAWDETLLKIFYIELFQQMNDLEACVIEVG VEETPLMNEDSILAVKKYFQRITLYLMEKKYSPCAWEVVRAEIMRSLSFSTNLQ KRLRRKD
Research Area	Immunology
Source	E.coli
Target Names	IFNA14
Expression Region	24-189aa
Notes	Repeated freezing and thawing is not recommended. Store working aliquots at 4°C for up to one week.
Tag Info	N-terminal GST-tagged
Mol. Weight	46.7kDa
Protein Length	Full Length of Mature Protein

Image



(Tris-Glycine gel) Discontinuous SDS-PAGE (reduced) with 5% enrichment gel and 15% separation gel.



Reconstitution

We recommend that this vial be briefly centrifuged prior to opening to bring the contents to the bottom. Please reconstitute protein in deionized sterile water to a concentration of 0.1-1.0 mg/mL. We recommend to add 5-50% of glycerol (final concentration) and aliquot for long-term storage at -20°C/-80°C. Our default final concentration of glycerol is 50%. Customers could use it as reference.

Shelf Life

The shelf life is related to many factors, storage state, buffer ingredients, storage temperature and the stability of the protein itself. Generally, the shelf life of liquid form is 6 months at -20°C/-80°C. The shelf life of lyophilized form is 12 months at -20°C/-80°C.