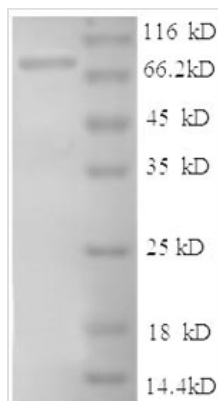




Recombinant Human Intercellular adhesion molecule 1 (ICAM1), partial

Product Code	CSB-EP010949HU
Relevance	ICAM proteins are ligands for the leukocyte adhesion protein LFA-1 (integrin alpha-L/beta-2). During leukocyte trans-endothelial migration, ICAM1 engagent promotes the assbly of endothelial apical cups through ARHGEF26/SGEF and RHOG activation. In case of rhinovirus infection acts as a cellular receptor for the virus.
Abbreviation	Recombinant Human ICAM1 protein, partial
Storage	The shelf life is related to many factors, storage state, buffer ingredients, storage temperature and the stability of the protein itself. Generally, the shelf life of liquid form is 6 months at -20°C/-80°C. The shelf life of lyophilized form is 12 months at -20°C/-80°C.
Uniprot No.	P05362
Alias	Major group rhinovirus receptor; CD54
Product Type	Recombinant Protein
Immunogen Species	Homo sapiens (Human)
Purity	Greater than 90% as determined by SDS-PAGE.
Sequence	QTSVSPSKVILPRGGSVLVTCSTSCDQPKLLGIETPLPKKELLLPGNNRKVYEL SNVQEDSQPMCYSNCPDGQSTAKTFLT VYWTPERVELAPLPSWQPVGKNLT LRCQVEGGAPRANLTVVLLRGEKELKREPAVGEPAEVTTTVLVRRDHHGANF SCRTELDLRPQGLELFENTSAPYQLQTFVLPATPPQLVSPRVLEVDTQGT VVC SLDGLFPVSEAQVHLALGDQRLNPTVTYGNDSFSAKASVSVTAEDEGTQRLT CAVILGNQSQETLQTVTIYSFPAPNVILTKPEVSEGTEVTVKCEAHPRAKVTLN GVPAQPLGPRAQLLLKATPEDNGRSFSCSATLEVAGQLIHKNTREL RVLYGP RLDERDCPGNWTWPENSQQTPMCQAWGNPLPELKCLKDGTFFPLPIGESVTV TRDLEGTYLCRARSTQGEVTRKVTVNVLSPRYE
Research Area	Cell Adhesion
Source	E.coli
Target Names	ICAM1
Expression Region	28-480aa
Notes	Repeated freezing and thawing is not recommended. Store working aliquots at 4°C for up to one week.
Tag Info	N-terminal GST-tagged
Mol. Weight	76.5kDa
Protein Length	Partial
Image	



(Tris-Glycine gel) Discontinuous SDS-PAGE (reduced) with 5% enrichment gel and 15% separation gel.

Reconstitution

We recommend that this vial be briefly centrifuged prior to opening to bring the contents to the bottom. Please reconstitute protein in deionized sterile water to a concentration of 0.1-1.0 mg/mL. We recommend to add 5-50% of glycerol (final concentration) and aliquot for long-term storage at -20°C/-80°C. Our default final concentration of glycerol is 50%. Customers could use it as reference.

Shelf Life

The shelf life is related to many factors, storage state, buffer ingredients, storage temperature and the stability of the protein itself. Generally, the shelf life of liquid form is 6 months at -20°C/-80°C. The shelf life of lyophilized form is 12 months at -20°C/-80°C.