



Recombinant Human Endoplasmic (HSP90B1), partial

Product Code	CSB-EP010814HU1
Relevance	Molecular chaperone that functions in the processing and transport of secreted proteins. When associated with CNPY3, required for proper folding of Toll-like receptors . Functions in endoplasmic reticulum associated degradation (ERAD). Has ATPase activity.1 Publication
Abbreviation	Recombinant Human HSP90B1 protein, partial
Storage	The shelf life is related to many factors, storage state, buffer ingredients, storage temperature and the stability of the protein itself. Generally, the shelf life of liquid form is 6 months at -20°C/-80°C. The shelf life of lyophilized form is 12 months at -20°C/-80°C.
Uniprot No.	P14625
Alias	94 kDa glucose-regulated protein ;GRP-94Heat shock protein 90 kDa beta member 1Tumor rejection antigen 1gp96 homolog
Product Type	Recombinant Protein
Immunogen Species	Homo sapiens (Human)
Purity	Greater than 90% as determined by SDS-PAGE.
Sequence	VDGTVEEDLGKSREGSRTDDEVVQREEEAIQLDGLNASQIRELREKSEKFAFQ AEVNRMMKLIINSLYKNKEIFLRELISNASDALDKIRLISLTDENALSGNEELTVKI KCDKEKNLLHVTDTGVGMTREELVKNLGTIAKSGTSEFLNKMTEAQEDGQSTS ELIGQFGVGFYSAFLVADKVIVTSKHNNDTQHIWESDSNEFSVIADPRGNTLGR GTTITLVLKEEASDYLELDTIKNLVKKYSQFINFPYVWSSKTETVEEPMEEEEE AKEEKEESDDEAAVEEEEEEEKPKTKKVEKTVWDWELMNDIKPIWQRPSKEV EEDEYKAFYKSFSKESDDPMAYIHFTAEGEVTFKSILFVPTSAPRGLFDEYGSK KSDYIKLYVRRVFITDDFHDMMPKYLNFBVKGVDSDDLPLNVSRETLQQHKLL KVIRKKLVRKTLDMIKKIADDKYNDTFWKEFGTNIKLGVEDHSNRTRLAKLLRF QSSHPTDITSLDQYVERMKEKQDKIYFMAGSSRKEAESSPFVERLLKKGYEY IYLTEPVDEYCIQALPEFDGKRFQNVAKEGVKFDESEKTKESREAVEKEFEPL NWMKDKALKDKIEKAVVSQRLTESPCALVASQYGWSGNMERIMKAQAYQTG KDISTNYYASQKKTFEINPRHPLIRDMLRRIKEDEDDKTVDLAVVLFETATLRS GYLLPDTKAYGDRIERMLRLSLNIDPDAKVEEEPEEEPEETAEDTTEDTEQDED EEMDVGTDEEEETAKESTAE
Research Area	Metabolism
Source	E.coli
Target Names	HSP90B1
Expression Region	27-799aa
Notes	Repeated freezing and thawing is not recommended. Store working aliquots at 4°C for up to one week.

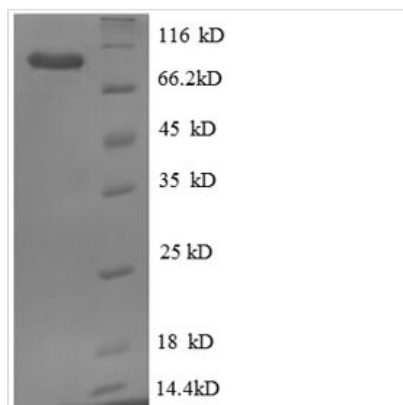


Tag Info N-terminal 6xHis-tagged

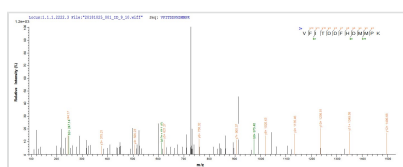
Mol. Weight 93.1kDa

Protein Length Partial

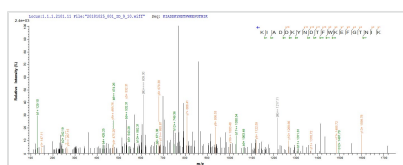
Image



(Tris-Glycine gel) Discontinuous SDS-PAGE (reduced) with 5% enrichment gel and 15% separation gel.



Based on the SEQUEST from database of E.coli host and target protein, the LC-MS/MS Analysis result of CSB-RP108894h could indicate that this peptide derived from E.coli-expressed Homo sapiens (Human) HSP90B1.



Based on the SEQUEST from database of E.coli host and target protein, the LC-MS/MS Analysis result of CSB-RP108894h could indicate that this peptide derived from E.coli-expressed Homo sapiens (Human) HSP90B1.

Reconstitution

We recommend that this vial be briefly centrifuged prior to opening to bring the contents to the bottom. Please reconstitute protein in deionized sterile water to a concentration of 0.1-1.0 mg/mL. We recommend to add 5-50% of glycerol (final concentration) and aliquot for long-term storage at -20°C/-80°C. Our default final concentration of glycerol is 50%. Customers could use it as reference.

Shelf Life

The shelf life is related to many factors, storage state, buffer ingredients, storage temperature and the stability of the protein itself. Generally, the shelf life of liquid form is 6 months at -20°C/-80°C. The shelf life of lyophilized form is 12 months at -20°C/-80°C.