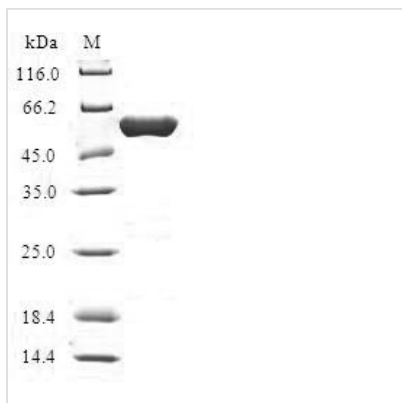




Recombinant Human Hydroxymethylglutaryl-CoA lyase, mitochondrial (HMGCL)

Product Code	CSB-EP010563HU
Relevance	Key enzyme in ketogenesis (ketone body formation). Terminal step in leucine catabolism. Ketone bodies (beta-hydroxybutyrate, acetoacetate and acetone) are essential as an alternative source of energy to glucose, as lipid precursors and as regulators of metabolism.
Abbreviation	Recombinant Human HMGCL protein
Storage	The shelf life is related to many factors, storage state, buffer ingredients, storage temperature and the stability of the protein itself. Generally, the shelf life of liquid form is 6 months at -20°C/-80°C. The shelf life of lyophilized form is 12 months at -20°C/-80°C.
Uniprot No.	P35914
Alias	3-hydroxy-3-methylglutarate-CoA lyase
Product Type	Recombinant Protein
Immunogen Species	Homo sapiens (Human)
Purity	Greater than 90% as determined by SDS-PAGE.
Sequence	<p> TLPKRVKIVEVGPRDGLQNEKNIVSTPVKIKLIDMLSEAGLSVIETTSFVSPKWV PQMGDHTVELKGIQKFPGINYPVLTPNLKGFEAAVAAGAKEVVIFGAASELFTK KNINCSIEESFQRFDAILKAAQSANISVRGYVSCALGCPYEGKISPAKVAEVTCK FYSMGCYEISLGDITGVGTPGIMKDMLSAVMQEVPLAALAVHCHDITYGQALAN TLMALQMGSVVDSSVAGLGGCPYAQGASGNLATEDLVYMLEGLGIHTGVNL QKLLEAGNFICQALNRKTSSKVAQATCKL </p>
Research Area	Signal Transduction
Source	E.coli
Target Names	HMGCL
Protein Names	Recommended name: Hydroxymethylglutaryl-CoA lyase, mitochondrial Short name= HL Short name= HMG-CoA lyase EC= 4.1.3.4 Alternative name(s): 3-hydroxy-3-methylglutarate-CoA lyase
Expression Region	1-325aa
Notes	Repeated freezing and thawing is not recommended. Store working aliquots at 4°C for up to one week.
Tag Info	N-terminal GST-tagged
Mol. Weight	58.5kDa
Protein Length	Full Length
Image	



(Tris-Glycine gel) Discontinuous SDS-PAGE (reduced) with 5% enrichment gel and 15% separation gel.

Reconstitution

We recommend that this vial be briefly centrifuged prior to opening to bring the contents to the bottom. Please reconstitute protein in deionized sterile water to a concentration of 0.1-1.0 mg/mL. We recommend to add 5-50% of glycerol (final concentration) and aliquot for long-term storage at -20°C/-80°C. Our default final concentration of glycerol is 50%. Customers could use it as reference.

Shelf Life

The shelf life is related to many factors, storage state, buffer ingredients, storage temperature and the stability of the protein itself. Generally, the shelf life of liquid form is 6 months at -20°C/-80°C. The shelf life of lyophilized form is 12 months at -20°C/-80°C.