



Recombinant Human Heart- and neural crest derivatives-expressed protein 2 (HAND2)

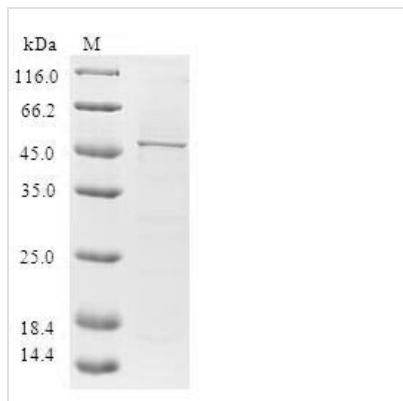
Product Code	CSB-EP010126HU
Relevance	Essential for cardiac morphogenesis, particularly for the formation of the right ventricle and of the aortic arch arteries. Required for vascular development and regulation of angiogenesis, possibly through a VEGF signaling pathway. Plays also an important role in limb development, particularly in the establishment of anterior-posterior polarization, acting as an upstream regulator of sonic hedgehog (SHH) induction in the limb bud. Is involved in the development of branchial arches, which give rise to unique structures in the head and neck. Binds DNA on E-box consensus sequence 5'-CANNTG-3'
Abbreviation	Recombinant Human HAND2 protein
Storage	The shelf life is related to many factors, storage state, buffer ingredients, storage temperature and the stability of the protein itself. Generally, the shelf life of liquid form is 6 months at -20°C/-80°C. The shelf life of lyophilized form is 12 months at -20°C/-80°C.
Uniprot No.	P61296
Alias	Class A basic helix-loop-helix protein 26
Product Type	Recombinant Protein
Immunogen Species	Homo sapiens (Human)
Purity	Greater than 90% as determined by SDS-PAGE.
Sequence	MSLVGGFPHHPVHHEGYPFAAAAAASRCSHEENPYFHGWLIGHPEMSPPD YSMALSYSPEYASGTANRKERRRRTQSINSAFAELRECIPNVPADTKLSKIKTLR LATSYIAYLMDLLAKDDQNGEAEAFKAEIKKTDVKEEKRKKELENEILKSTVSSND KKTKGRTGWPQHVALELKQ
Research Area	Epigenetics and Nuclear Signaling
Source	E.coli
Target Names	HAND2
Protein Names	Recommended name: Heart- and neural crest derivatives-expressed protein 2 Alternative name(s): Class A basic helix-loop-helix protein 26 Short name= bHLHa26 Deciduum, heart, autonomic nervous system and neural crest derivatives-expressed pro
Expression Region	1-180aa
Notes	Repeated freezing and thawing is not recommended. Store working aliquots at 4°C for up to one week.
Tag Info	N-terminal GST-tagged
Mol. Weight	47.3kDa



Protein Length

Full Length of Isoform 2

Image



(Tris-Glycine gel) Discontinuous SDS-PAGE (reduced) with 5% enrichment gel and 15% separation gel.

Reconstitution

We recommend that this vial be briefly centrifuged prior to opening to bring the contents to the bottom. Please reconstitute protein in deionized sterile water to a concentration of 0.1-1.0 mg/mL. We recommend to add 5-50% of glycerol (final concentration) and aliquot for long-term storage at -20°C/-80°C. Our default final concentration of glycerol is 50%. Customers could use it as reference.

Shelf Life

The shelf life is related to many factors, storage state, buffer ingredients, storage temperature and the stability of the protein itself. Generally, the shelf life of liquid form is 6 months at -20°C/-80°C. The shelf life of lyophilized form is 12 months at -20°C/-80°C.