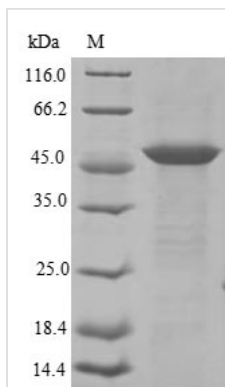




# Recombinant Rat Heat-stable enterotoxin receptor (Gucy2c), partial

<b>Product Code</b>	CSB-EP010053RA
<b>Abbreviation</b>	Recombinant Rat GuCy2c protein, partial
<b>Storage</b>	The shelf life is related to many factors, storage state, buffer ingredients, storage temperature and the stability of the protein itself. Generally, the shelf life of liquid form is 6 months at -20°C/-80°C. The shelf life of lyophilized form is 12 months at -20°C/-80°C.
<b>Uniprot No.</b>	P23897
<b>Product Type</b>	Recombinant Protein
<b>Immunogen Species</b>	Rattus norvegicus (Rat)
<b>Purity</b>	Greater than 85% as determined by SDS-PAGE.
<b>Sequence</b>	SQVRQKCHNGTYEISVLMMDNSAYKEPLQNLRDVEEGLDIVRKRLREAELNV TVNATFIYSDGLIHKSGDCRSSTCEGLDLLREITRDRKMGCVLMGSPCTYSTF QMYLDTELNYPMISAGSFGLSCDYKETLTRILPPARKLMYFLVDFWKVNNAPF KTFSWNSSYVYKNGSEPEDCFWYLNAL EAGVSYFSEVLSFKDVLRRSEQFQE ILMGRNRKSNVIVMCGTPETFYNVKGD LKVADDTVVILVDLFSNH YFEDDTRAP EYMDNVLVLTLPPEKFIANASVSGRFP SERSDFSLAYLEG TLLFGHMLQT FLEN GESVTPPKFARA FRNLTFQGLEGPVTLDDSGDIDNIMCLLYVSLDTRKYKVLMA YDTHKNQTIPVATSPNFIWKNHRLPNDVPGLGPQ
<b>Research Area</b>	Microbiology
<b>Source</b>	E.coli
<b>Target Names</b>	Gucy2c
<b>Protein Names</b>	Recommended name: Heat-stable enterotoxin receptor Short name= STA receptor EC= 4.6.1.2 Alternative name(s): Guanylyl cyclase C Short name= GC- C Intestinal guanylate cyclase
<b>Expression Region</b>	23-429aa
<b>Notes</b>	Repeated freezing and thawing is not recommended. Store working aliquots at 4°C for up to one week.
<b>Tag Info</b>	N-terminal 6xHis-tagged and C-terminal Myc-tagged
<b>Mol. Weight</b>	51.9 kDa
<b>Protein Length</b>	Partial
<b>Image</b>	



(Tris-Glycine gel) Discontinuous SDS-PAGE (reduced) with 5% enrichment gel and 15% separation gel.

### Reconstitution

We recommend that this vial be briefly centrifuged prior to opening to bring the contents to the bottom. Please reconstitute protein in deionized sterile water to a concentration of 0.1-1.0 mg/mL. We recommend to add 5-50% of glycerol (final concentration) and aliquot for long-term storage at -20°C/-80°C. Our default final concentration of glycerol is 50%. Customers could use it as reference.

### Shelf Life

The shelf life is related to many factors, storage state, buffer ingredients, storage temperature and the stability of the protein itself. Generally, the shelf life of liquid form is 6 months at -20°C/-80°C. The shelf life of lyophilized form is 12 months at -20°C/-80°C.