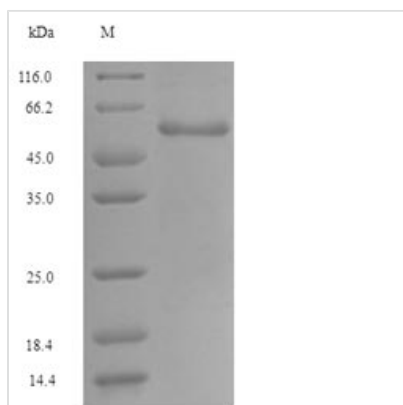




# Recombinant Human Glutaminase kidney isoform, mitochondrial (GLS), partial

<b>Product Code</b>	CSB-EP009528HU(F)
<b>Relevance</b>	Catalyzes the first reaction in the primary pathway for the renal catabolism of glutamine. Plays a role in maintaining acid-base homeostasis. Regulates the levels of the neurotransmitter glutamate in the brain. Isoform 2 lacks catalytic activity.
<b>Abbreviation</b>	Recombinant Human GLS protein, partial
<b>Storage</b>	The shelf life is related to many factors, storage state, buffer ingredients, storage temperature and the stability of the protein itself. Generally, the shelf life of liquid form is 6 months at -20°C/-80°C. The shelf life of lyophilized form is 12 months at -20°C/-80°C.
<b>Uniprot No.</b>	O94925
<b>Alias</b>	K-glutaminase L-glutamine amidohydrolase
<b>Product Type</b>	Recombinant Protein
<b>Immunogen Species</b>	Homo sapiens (Human)
<b>Purity</b>	Greater than 90% as determined by SDS-PAGE.
<b>Sequence</b>	YVGFSNATFQSERESGDRNFAIGYYLKEKKCFPEGTDMVGILDFYFQLCSIEVT CESASVMAATLANGGFCPITGERVLSPEAVRNTLSLMHSCGMYDFSGQFAFH VGLPAKSGVAGGILLVVPNVMGMMCWSPPLDKMGNSVKGIHFCHDLVSLCNF HNYDNLRHFAKKLDPRREGGDQRVKSVINLLFAAYTGDVSALRRFALSAMD EQRDYDSRTALHVAAAEGHVEVVKFLLACKVNPFPKDRWNNTPMDEALHFG HHDVFKILQEYQVQYTPQGDSDNGKENQTVHKNLDGLL
<b>Research Area</b>	Metabolism
<b>Source</b>	E.coli
<b>Target Names</b>	GLS
<b>Expression Region</b>	370-669aa
<b>Notes</b>	Repeated freezing and thawing is not recommended. Store working aliquots at 4°C for up to one week.
<b>Tag Info</b>	N-terminal GST-tagged
<b>Mol. Weight</b>	60.4kDa
<b>Protein Length</b>	Partial
<b>Image</b>	



(Tris-Glycine gel) Discontinuous SDS-PAGE (reduced) with 5% enrichment gel and 15% separation gel.

### Reconstitution

We recommend that this vial be briefly centrifuged prior to opening to bring the contents to the bottom. Please reconstitute protein in deionized sterile water to a concentration of 0.1-1.0 mg/mL. We recommend to add 5-50% of glycerol (final concentration) and aliquot for long-term storage at -20°C/-80°C. Our default final concentration of glycerol is 50%. Customers could use it as reference.

### Shelf Life

The shelf life is related to many factors, storage state, buffer ingredients, storage temperature and the stability of the protein itself. Generally, the shelf life of liquid form is 6 months at -20°C/-80°C. The shelf life of lyophilized form is 12 months at -20°C/-80°C.