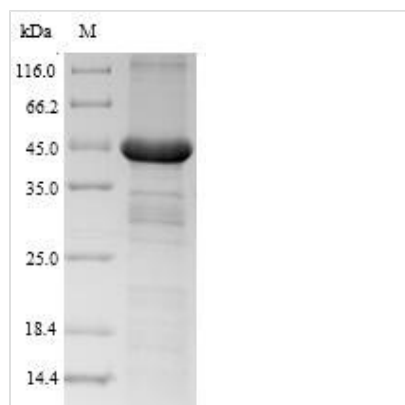


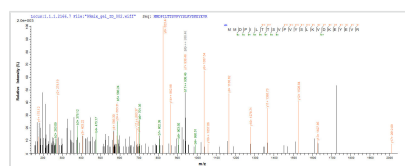


Recombinant Human Growth hormone receptor (GHR), partial

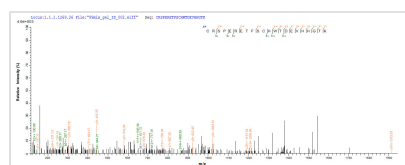
Product Code	CSB-EP009411HU
Relevance	Receptor for pituitary gland growth hormone involved in regulating postnatal body growth. On ligand binding, couples to the JAK2/STAT5 pathway
Abbreviation	Recombinant Human GHR protein, partial
Storage	The shelf life is related to many factors, storage state, buffer ingredients, storage temperature and the stability of the protein itself. Generally, the shelf life of liquid form is 6 months at -20°C/-80°C. The shelf life of lyophilized form is 12 months at -20°C/-80°C.
Uniprot No.	P10912
Alias	Somatotropin receptor
Product Type	Recombinant Protein
Immunogen Species	Homo sapiens (Human)
Purity	Greater than 90% as determined by SDS-PAGE.
Sequence	FSGSEATAAILS RAPWSLQSVNPGLKTNSSKEPKFTKCRSPERETF SCHWTDE VHHGTKNLGPIQLFYTRRNTQEWTQEWKECPDYVSAGENSCYFNSSFTSIWI PYCIKLTSNGGTVDKCFVDEIVQPDPIALNWTLLNVSLTG I HADIQVRWEA PRNADIQKGWMVLEYELQYKEVNETKWKMMDPILTTSPVYSLKVDKEYEVR VRSKQRNSGNYGEFSEVLYVTLPQMSQFTCEEDFY
Research Area	Neuroscience
Source	E.coli
Target Names	GHR
Expression Region	19-264aa
Notes	Repeated freezing and thawing is not recommended. Store working aliquots at 4°C for up to one week.
Tag Info	N-terminal 6xHis-SUMO-tagged
Mol. Weight	44.4kDa
Protein Length	Extracellular Domain
Image	



(Tris-Glycine gel) Discontinuous SDS-PAGE (reduced) with 5% enrichment gel and 15% separation gel.



Based on the SEQUEST from database of E.coli host and target protein, the LC-MS/MS Analysis result of CSB-EP009411HU could indicate that this peptide derived from E.coli-expressed Homo sapiens (Human) GHR.



Based on the SEQUEST from database of E.coli host and target protein, the LC-MS/MS Analysis result of CSB-EP009411HU could indicate that this peptide derived from E.coli-expressed Homo sapiens (Human) GHR.

Description

The preparation of Recombinant Human GHR protein included 3 main steps: construct the expression vector, expression of protein of interest, and protein purification. Every step was performed under a strict QC system so that we got the premium protein. This GHR was expressed in E.coli at and fused with N-terminal 6xHis-SUMO tag. According to SDS-PAGE, the purity turns out to be 90%+.

GHR belongs to a large family of cytokine or hematopoietic receptors. It activates signal transducers (JAK-2/STAT), the cascade of the mitogen-activated protein kinase (MAPK) and the phosphoinositide 3-kinase (PI3K) which are important for cell growth and survival. Recently, GHR is reported to be associated with cancer development and progression, including breast cancer and hepatocellular carcinoma. In addition, GHR relates to breast cancer chemoresistance and metastasis that GHR knockdown decreases the chemoresistant and metastatic behavior of estrogen receptor negative breast cancer. It was found that sorafenib could stimulate GHR expression in HCC cell lines, while other drugs including regorafenib, lenvatinib, and cabozantinib had no effects on GHR expression.

Reconstitution

We recommend that this vial be briefly centrifuged prior to opening to bring the contents to the bottom. Please reconstitute protein in deionized sterile water to a concentration of 0.1-1.0 mg/mL. We recommend to add 5-50% of glycerol (final concentration) and aliquot for long-term storage at -20°C/-80°C. Our default final concentration of glycerol is 50%. Customers could use it as reference.

Shelf Life

The shelf life is related to many factors, storage state, buffer ingredients,



storage temperature and the stability of the protein itself.

Generally, the shelf life of liquid form is 6 months at -20°C/-80°C. The shelf life of lyophilized form is 12 months at -20°C/-80°C.