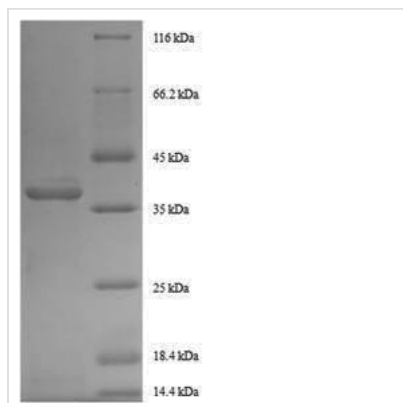


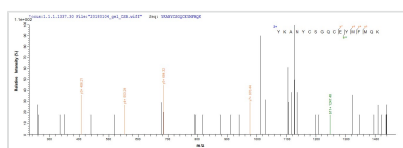


# Recombinant Human Growth/differentiation factor 11 (GDF11)

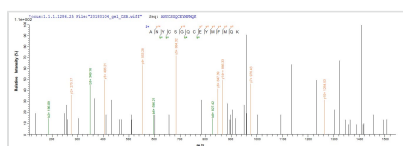
<b>Product Code</b>	CSB-EP009344HU
<b>Relevance</b>	Secreted signal that acts globally to specify positional identity along the anterior/posterior axis during development. Play critical roles in patterning both mesodermal and neural tissues and in establishing the skeletal pattern.
<b>Abbreviation</b>	Recombinant Human GDF11 protein
<b>Storage</b>	The shelf life is related to many factors, storage state, buffer ingredients, storage temperature and the stability of the protein itself. Generally, the shelf life of liquid form is 6 months at -20°C/-80°C. The shelf life of lyophilized form is 12 months at -20°C/-80°C.
<b>Uniprot No.</b>	O95390
<b>Alias</b>	Bone morphogenetic protein 11 Short name: BMP-11
<b>Product Type</b>	Recombinant Protein
<b>Immunogen Species</b>	Homo sapiens (Human)
<b>Purity</b>	Greater than 90% as determined by SDS-PAGE.
<b>Sequence</b>	NLGLDCDEHSSSRCCRYPLTVDFEAFGWDWIIAPKRYKANYCSGQCEYMFM QKYPHTHLVQQANPRGSAGPCCTPTKMSPINMLYFNDKQQIIYGKIPGMVVDR CGCS
<b>Research Area</b>	Neuroscience
<b>Source</b>	E.coli
<b>Target Names</b>	GDF11
<b>Expression Region</b>	299-407aa
<b>Notes</b>	Repeated freezing and thawing is not recommended. Store working aliquots at 4°C for up to one week.
<b>Tag Info</b>	N-terminal 6xHis-SUMO-tagged
<b>Mol. Weight</b>	28.5kDa
<b>Protein Length</b>	Full Length of Mature Protein
<b>Image</b>	



(Tris-Glycine gel) Discontinuous SDS-PAGE (reduced) with 5% enrichment gel and 15% separation gel.



Based on the SEQUEST from database of E.coli host and target protein, the LC-MS/MS Analysis result of CSB-EP009344HU could indicate that this peptide derived from E.coli-expressed Homo sapiens (Human) GDF11.



Based on the SEQUEST from database of E.coli host and target protein, the LC-MS/MS Analysis result of CSB-EP009344HU could indicate that this peptide derived from E.coli-expressed Homo sapiens (Human) GDF11.

## Description

Discover the remarkable quality of our Recombinant Human GDF11, meticulously designed for optimal performance in neuroscience research. This product features the full length of mature Growth/differentiation factor 11 (GDF-11), a critical protein involved in the regulation of cellular growth and differentiation, particularly in the nervous system.

Produced in E.coli, the Recombinant Human GDF11 covers an expression region of 299-407 amino acids and is equipped with an N-terminal 6xHis-SUMO tag to ensure efficient purification and detection. With a purity greater than 90% as determined by SDS-PAGE, our product is available in both liquid and lyophilized powder formats, catering to diverse research requirements. Choose the precision-crafted Recombinant Human GDF11 to elevate your neuroscience research with confidence and consistency.

## Reconstitution

We recommend that this vial be briefly centrifuged prior to opening to bring the contents to the bottom. Please reconstitute protein in deionized sterile water to a concentration of 0.1-1.0 mg/mL. We recommend to add 5-50% of glycerol (final concentration) and aliquot for long-term storage at -20°C/-80°C. Our default final concentration of glycerol is 50%. Customers could use it as reference.

## Shelf Life

The shelf life is related to many factors, storage state, buffer ingredients, storage temperature and the stability of the protein itself. Generally, the shelf life of liquid form is 6 months at -20°C/-80°C. The shelf life of lyophilized form is 12 months at -20°C/-80°C.