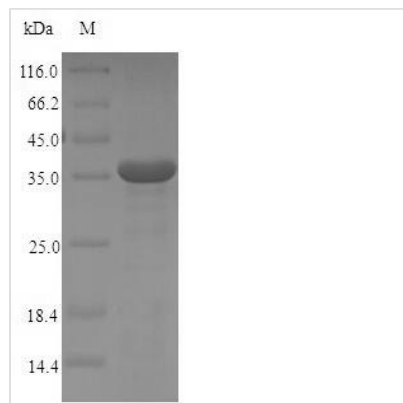




Recombinant Human High affinity immunoglobulin epsilon receptor subunit alpha (FCER1A), partial

Product Code	CSB-EP008532HU
Relevance	Binds to the Fc region of immunoglobulins epsilon. High affinity receptor. Responsible for initiating the allergic response. Binding of allergen to receptor-bound IgE leads to cell activation and the release of mediators (such as histamine) responsible for the manifestations of allergy. The same receptor also induces the secretion of important lymphokines.
Abbreviation	Recombinant Human FCER1A protein, partial
Storage	The shelf life is related to many factors, storage state, buffer ingredients, storage temperature and the stability of the protein itself. Generally, the shelf life of liquid form is 6 months at -20°C/-80°C. The shelf life of lyophilized form is 12 months at -20°C/-80°C.
Uniprot No.	P12319
Alias	c-epsilon RI-alpha Short name: FcERI IgE Fc receptor subunit alpha
Product Type	Recombinant Protein
Immunogen Species	Homo sapiens (Human)
Purity	Greater than 90% as determined by SDS-PAGE.
Sequence	VPQKPKVSLNPPWNRIFKGENVTLCNGNNFFEVSSTKWFHNGSLSEETNSS LNIVNAKFEDSGEYKQCQHQVNESEPVYLEVFSDWLLLQASAEVVMEGQPLF LRCHGWRNWDVYKVIYYKDGEALKYWYENHNISITNATVEDSGTYYCTGKVV QLDYESEPLNITVIKAPREKYWLQ
Research Area	Immunology
Source	E.coli
Target Names	FCER1A
Protein Names	Recommended name: High affinity immunoglobulin epsilon receptor subunit alpha Alternative name(s): Fc-epsilon RI-alpha Short name= FcERI IgE Fc receptor subunit alpha
Expression Region	26-205aa
Notes	Repeated freezing and thawing is not recommended. Store working aliquots at 4°C for up to one week.
Tag Info	N-terminal 6xHis-SUMO-tagged
Mol. Weight	37.0kDa
Protein Length	Extracellular Domain
Image	



(Tris-Glycine gel) Discontinuous SDS-PAGE (reduced) with 5% enrichment gel and 15% separation gel.

Description

The production of this Recombinant Human FCER1A protein required the insertion of a DNA fragment (FCER1A, 26-205aa) into a plasmid vector and the transferral of this vector into E.coli cells (the step of transformation). The cells were then cultured and induced to express the FCER1A protein. This recombinant protein was fused with N-terminal 6xHis-SUMO tag. Its purity is 90%+ determined by SDS-PAGE.

FCER1A (also known as FCE1A) is a gene providing an instruction of making a protein named high affinity immunoglobulin epsilon receptor subunit alpha (FCER1A) in human. FCER1A protein is also known as Fc-epsilon RI-alpha (FcERI) and IgE Fc receptor subunit alpha. This protein is a component of immunoglobulin epsilon receptor (IgE receptor), which is comprised of an alpha subunit, a beta subunit, and two gamma subunits. IgE receptor is the initiator of the allergic response by binding to the Fc region of immunoglobulins epsilon.

Reconstitution

We recommend that this vial be briefly centrifuged prior to opening to bring the contents to the bottom. Please reconstitute protein in deionized sterile water to a concentration of 0.1-1.0 mg/mL. We recommend to add 5-50% of glycerol (final concentration) and aliquot for long-term storage at -20°C/-80°C. Our default final concentration of glycerol is 50%. Customers could use it as reference.

Shelf Life

The shelf life is related to many factors, storage state, buffer ingredients, storage temperature and the stability of the protein itself. Generally, the shelf life of liquid form is 6 months at -20°C/-80°C. The shelf life of lyophilized form is 12 months at -20°C/-80°C.