



# Recombinant Human Prolyl endopeptidase FAP (FAP), partial

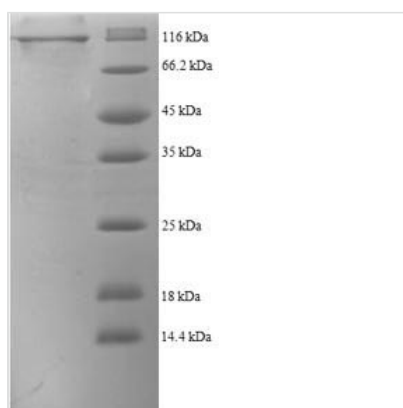
<b>Product Code</b>	CSB-EP008424HU
<b>Relevance</b>	<p>Cell surface glycoprotein serine protease that participates in Extracellular domain matrix degradation and involved in many cellular processes including tissue remodeling, fibrosis, wound healing, inflammation and tumor growth. Both plasma membrane and soluble forms exhibit post-proline cleaving endopeptidase activity, with a marked preference for Ala/Ser-Gly-Pro-Ser/Asn/Ala consensus sequences, on substrate such as alpha-2-antiplasmin SERPINF2 and SPRY2 . Degrade also gelatin, heat-denatured type I collagen, but not native collagen type I and IV, vitronectin, tenascin, laminin, fibronectin, fibrin or casein . Have also dipeptidyl peptidase activity, exhibiting the ability to hydrolyze the prolyl bond two residues from the N-terminus of synthetic dipeptide substrates provided that the penultimate residue is proline, with a preference for Ala-Pro, Ile-Pro, Gly-Pro, Arg-Pro and Pro-Pro . Natural neuropeptide hormones for dipeptidyl peptidase are the neuropeptide Y (NPY), peptide YY (PYY), substance P (TAC1) and brain natriuretic peptide 32 (NPPB) . The plasma membrane form, in association with either DPP4, PLAU or integrins, is involved in the pericellular proteolysis of the Extracellular domain matrix (ECM), and hence promotes cell adhesion, migration and invasion through the ECM. Plays a role in tissue remodeling during development and wound healing. Participates in the cell invasiveness towards the ECM in malignant melanoma cancers. Enhances tumor growth progression by increasing angiogenesis, collagen fiber degradation and apoptosis and by reducing antitumor response of the immune system. Promotes glioma cell invasion through the brain parenchyma by degrading the proteoglycan brevican. Acts as a tumor suppressor in melanocytic cells through regulation of cell proliferation and survival in a serine protease activity-independent manner.</p>
<b>Abbreviation</b>	Recombinant Human FAP protein, partial
<b>Storage</b>	The shelf life is related to many factors, storage state, buffer ingredients, storage temperature and the stability of the protein itself. Generally, the shelf life of liquid form is 6 months at -20°C/-80°C. The shelf life of lyophilized form is 12 months at -20°C/-80°C.
<b>Uniprot No.</b>	Q12884
<b>Product Type</b>	Recombinant Proteins
<b>Immunogen Species</b>	Homo sapiens (Human)
<b>Purity</b>	Greater than 90% as determined by SDS-PAGE.
<b>Sequence</b>	<p>LRPSRVHNSEENTMRALTLKDILNGTFSYKTFPPNWISGQEYLHQSDNNIVLY  NIETGQSYTILSNRTMKSVNASNYGLSPDRQFVYLESKWLWRYSYTATYYIY  DLSNGEFVRGNELPRPIQYLCWSPVGSKLAYVYQNNIYLKQRPDPPFQITFN  GRENKIFNGIPDWVYEEEMLATKYALWWSPNGKFLAYAEFNDTDIPVIAYSYY  GDEQYPRITINIPYKAGAKNPVVRIFIIDTTYPAYVGPQEVVPAMIASSDYYFS  WLTWVTDERVCLQWLKRVQNVSVLSICDFREDWQTWDCPKTQEHIEESRTG</p>



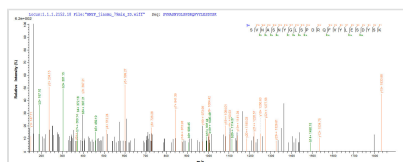
WAGGFFVSTPVFSYDAISYYKIFSDKDGYKHIHYIKDTVENAIQITSGKWEAINIF  
RVTQDSLFFYSSNEFEEYPGRRNIYRISIGSYPPSKKCVTCHLRKERCQYYTASF  
SDYAKYYALVCYGPPISTLHDGRTDQEIKILEENKELENALKNIQLPKEEIKKL  
EVDEITLWYKMILPPQFDRSKKYPLLIQVYGGPCSQSVRSVFAVNWISYLASKE  
GMVIALVDGRGTAFQGDKLLYAVYRKLGVYEVEDQITAVRKFIEMGFIDEKRIAI  
WGWSYGGYVSSLALASGTGLFKCGIAVAPVSSWEYYASVYTERFMGLPTKDD  
NLEHYKNSTVMARAEYFRNVDYLLIHGTADDNVHFQNSAQIAKALVNAQVDFQ  
AMWYSDQNHGLSGLSTNHLTYHMTHTFLKQCFLSD

<b>Research Area</b>	Cancer
<b>Source</b>	E.coli
<b>Target Names</b>	FAP
<b>Expression Region</b>	26-760aa
<b>Notes</b>	Repeated freezing and thawing is not recommended. Store working aliquots at 4°C for up to one week.
<b>Tag Info</b>	N-terminal GST-tagged
<b>Mol. Weight</b>	112.0kDa
<b>Protein Length</b>	partial

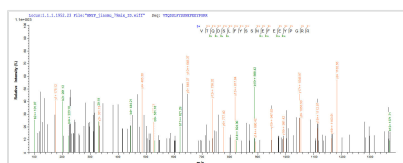
#### Image



(Tris-Glycine gel) Discontinuous SDS-PAGE (reduced) with 5% enrichment gel and 15% separation gel.



Based on the SEQUEST from database of E.coli host and target protein, the LC-MS/MS Analysis result of CSB-EP008424HU could indicate that this peptide derived from E.coli-expressed Homo sapiens (Human) FAP.



Based on the SEQUEST from database of E.coli host and target protein, the LC-MS/MS Analysis result of CSB-EP008424HU could indicate that this peptide derived from E.coli-expressed Homo sapiens (Human) FAP.

#### Shelf Life

The shelf life is related to many factors, storage state, buffer ingredients, storage temperature and the stability of the protein itself.

Generally, the shelf life of liquid form is 6 months at -20°C/-80°C. The shelf life of lyophilized form is 12 months at -20°C/-80°C.