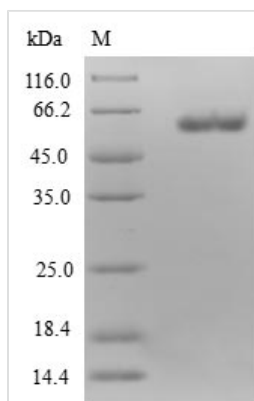




Recombinant Human Electron transfer flavoprotein subunit alpha, mitochondrial (ETF_A)

Product Code	CSB-EP007844HU
Relevance	The electron transfer flavoprotein serves as a specific electron acceptor for several dehydrogenases, including five acyl-CoA dehydrogenases, glutaryl-CoA and sarcosine dehydrogenase. It transfers the electrons to the main mitochondrial respiratory chain via ETF-ubiquinone oxidoreductase (ETF dehydrogenase).
Abbreviation	Recombinant Human ETF _A protein
Storage	The shelf life is related to many factors, storage state, buffer ingredients, storage temperature and the stability of the protein itself. Generally, the shelf life of liquid form is 6 months at -20°C/-80°C. The shelf life of lyophilized form is 12 months at -20°C/-80°C.
Uniprot No.	P13804
Product Type	Recombinant Protein
Immunogen Species	Homo sapiens (Human)
Purity	Greater than 90% as determined by SDS-PAGE.
Sequence	MFRAAAPGQLRRAASLLRFQSTLVIAEHANDSLAPITLNTITAATRLGGEVSCLV AGTKCDKVAQDLCKVAGIAKVLVAQHDVYKGLLPEELTPLILATQKQFNHYTHIC AGASAFGKNLLPRVAAKLEVAPISDIIAISKSPDTFVRTIYAGNALCTVKCDEKVKV FSVRGTSFDAAATSGGSASSEKASSTSPVEISEWLDQKLTKSDRPELTGAKVV VSGGRGLKSGENFKLLYDLADQLHAAVGASRAAVDAGFVPNDMQVGQTGKIV APELYIAVGISGAIQHLAGMKDSKTIVAINKDPEAPIFQVADYGIVADLFKVVPEM TEILKKK
Research Area	others
Source	E.coli
Target Names	ETF _A
Protein Names	Recommended name: Electron transfer flavoprotein subunit alpha, mitochondrial Short name= Alpha-ETF
Expression Region	1-333aa
Notes	Repeated freezing and thawing is not recommended. Store working aliquots at 4°C for up to one week.
Tag Info	N-terminal GST-tagged
Mol. Weight	62.1kDa
Protein Length	Full Length
Image	



(Tris-Glycine gel) Discontinuous SDS-PAGE (reduced) with 5% enrichment gel and 15% separation gel.

Reconstitution

We recommend that this vial be briefly centrifuged prior to opening to bring the contents to the bottom. Please reconstitute protein in deionized sterile water to a concentration of 0.1-1.0 mg/mL. We recommend to add 5-50% of glycerol (final concentration) and aliquot for long-term storage at -20°C/-80°C. Our default final concentration of glycerol is 50%. Customers could use it as reference.

Shelf Life

The shelf life is related to many factors, storage state, buffer ingredients, storage temperature and the stability of the protein itself. Generally, the shelf life of liquid form is 6 months at -20°C/-80°C. The shelf life of lyophilized form is 12 months at -20°C/-80°C.