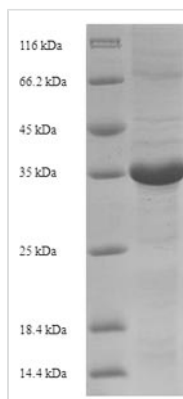




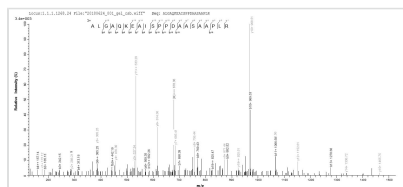
Recombinant Horse Erythropoietin (EPO)

Product Code	CSB-EP007743HO
Relevance	Erythropoietin is the principal hormone involved in the regulation of erythrocyte differentiation and the maintenance of a physiological level of circulating erythrocyte mass
Abbreviation	Recombinant Horse EPO protein
Storage	The shelf life is related to many factors, storage state, buffer ingredients, storage temperature and the stability of the protein itself. Generally, the shelf life of liquid form is 6 months at -20°C/-80°C. The shelf life of lyophilized form is 12 months at -20°C/-80°C.
Uniprot No.	Q867B1
Product Type	Recombinant Protein
Immunogen Species	Equus caballus (Horse)
Purity	Greater than 90% as determined by SDS-PAGE.
Sequence	APPRLICDSRVLERYILEAREAENVMTMGCAEGCSFGENVTVPDTKVNFYSWKR MEVEQQAVEVWQGLALLSEAILQGQALLANSSQPSETLRLHVDKAVSSLRSLT SLLRALGAQKEAISPPDAASAAPLRTFAVDTLCKLFRIYSNFLRGKCLKLYTGEAC RRGDR
Research Area	Others
Source	E.coli
Target Names	EPO
Protein Names	Recommended name: Erythropoietin
Expression Region	27-192aa
Notes	Repeated freezing and thawing is not recommended. Store working aliquots at 4°C for up to one week.
Tag Info	N-terminal 6xHis-SUMO-tagged
Mol. Weight	34.3kDa
Protein Length	Full Length of Mature Protein

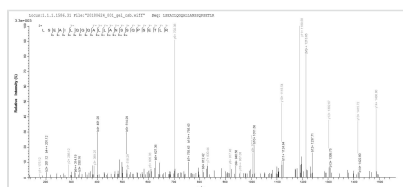
Image



(Tris-Glycine gel) Discontinuous SDS-PAGE (reduced) with 5% enrichment gel and 15% separation gel.



Based on the SEQUEST from database of E.coli host and target protein, the LC-MS/MS Analysis result of CSB-EP007743HO could indicate that this peptide derived from E.coli-expressed Equus caballus (Horse) EPO.



Based on the SEQUEST from database of E.coli host and target protein, the LC-MS/MS Analysis result of CSB-EP007743HO could indicate that this peptide derived from E.coli-expressed Equus caballus (Horse) EPO.

Reconstitution

We recommend that this vial be briefly centrifuged prior to opening to bring the contents to the bottom. Please reconstitute protein in deionized sterile water to a concentration of 0.1-1.0 mg/mL. We recommend to add 5-50% of glycerol (final concentration) and aliquot for long-term storage at -20°C/-80°C. Our default final concentration of glycerol is 50%. Customers could use it as reference.

Shelf Life

The shelf life is related to many factors, storage state, buffer ingredients, storage temperature and the stability of the protein itself. Generally, the shelf life of liquid form is 6 months at -20°C/-80°C. The shelf life of lyophilized form is 12 months at -20°C/-80°C.