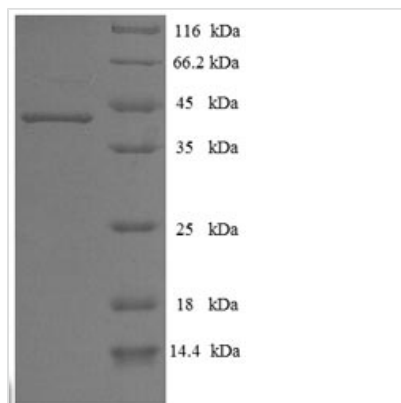




Recombinant Human Chymotrypsin-like elastase family member 3A (CELA3A)

| | |
|--------------------------|---|
| Product Code | CSB-EP007588HU |
| Relevance | Efficient protease with alanine specificity but only little elastolytic activity. |
| Abbreviation | Recombinant Human CELA3A protein |
| Storage | The shelf life is related to many factors, storage state, buffer ingredients, storage temperature and the stability of the protein itself. Generally, the shelf life of liquid form is 6 months at -20°C/-80°C. The shelf life of lyophilized form is 12 months at -20°C/-80°C. |
| Uniprot No. | P09093 |
| Alias | Elastase IIIA;Elastase-3A;Protease E |
| Product Type | Recombinant Protein |
| Immunogen Species | Homo sapiens (Human) |
| Purity | Greater than 90% as determined by SDS-PAGE. |
| Sequence | VVHGEDAVPYSWPWQVSLQYEKSGSFYHTCGGSLIAPDWVVTAGHCISRDLT YQVVLGEYNLAVKEGPEQVIPINSEELFVHPLWNRSCVACGNDIALIKLSRSAQ LGDAVQLASLPPAGDILPNKTPCYITGWGRLYTNGPLPDKLQQARLPVVDYKH CSRWNWWGSTVKKTMVCAGGYIRSGCNGDSGGPLNCPTEDGGWQVHGVT SFVSAFGCNFIWKPTVFTRVSAFIDWIEETIASH |
| Research Area | Cell Biology |
| Source | E.coli |
| Target Names | CELA3A |
| Expression Region | 29-270aa |
| Notes | Repeated freezing and thawing is not recommended. Store working aliquots at 4°C for up to one week. |
| Tag Info | N-terminal 6xHis-SUMO-tagged |
| Mol. Weight | 42.6kDa |
| Protein Length | Full Length of Mature Protein |
| Image | |



(Tris-Glycine gel) Discontinuous SDS-PAGE (reduced) with 5% enrichment gel and 15% separation gel.

Description

The expression region of this recombinant Human CELA3A covers amino acids 29-270. This CELA3A protein is expected to have a theoretical molecular weight of 42.6 kDa. This CELA3A protein is produced using e.coli expression system. The CELA3A gene fragment has been modified by fusing the N-terminal 6xHis-SUMO tag, providing convenience in detecting and purifying the recombinant CELA3A protein during the following stages.

Human chymotrypsin-like elastase family member 3A (CELA3A) is a serine protease enzyme primarily expressed in the pancreas. CELA3A belongs to the chymotrypsin family and participates in the digestive process by cleaving peptide bonds, specifically targeting proteins with aromatic or large hydrophobic residues. CELA3A is released into the small intestine to assist in the breakdown of dietary proteins into smaller peptides and amino acids, facilitating their absorption. Beyond its digestive role, research suggests that alterations in CELA3A expression or activity may be associated with certain pancreatic disorders. Understanding the functions of CELA3A contributes to insights into digestive physiology and potential implications for pancreatic health.

Reconstitution

We recommend that this vial be briefly centrifuged prior to opening to bring the contents to the bottom. Please reconstitute protein in deionized sterile water to a concentration of 0.1-1.0 mg/mL. We recommend to add 5-50% of glycerol (final concentration) and aliquot for long-term storage at -20°C/-80°C. Our default final concentration of glycerol is 50%. Customers could use it as reference.

Shelf Life

The shelf life is related to many factors, storage state, buffer ingredients, storage temperature and the stability of the protein itself. Generally, the shelf life of liquid form is 6 months at -20°C/-80°C. The shelf life of lyophilized form is 12 months at -20°C/-80°C.