

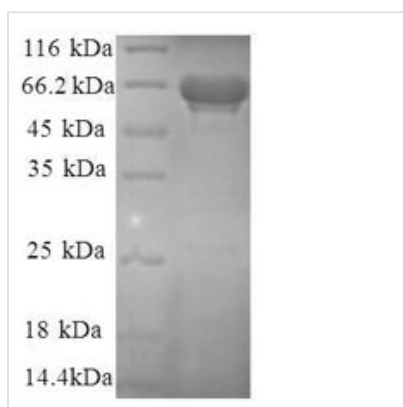


Recombinant Human Eukaryotic translation initiation factor 3 subunit F (EIF3F), partial

Product Code	CSB-EP007535HU1
Relevance	Component of the eukaryotic translation initiation factor 3 (eIF-3) complex, which is required for several steps in the initiation of protein synthesis. The eIF-3 complex associates with the 40S ribosome and facilitates the recruitment of eIF-1, eIF-1A, eIF-2:GTP:methionyl-tRNA _i and eIF-5 to form the 43S preinitiation complex (43S PIC). The eIF-3 complex stimulates mRNA recruitment to the 43S PIC and scanning of the mRNA for AUG recognition. The eIF-3 complex is also required for disassembly and recycling of post-termination ribosomal complexes and subsequently prevents premature joining of the 40S and 60S ribosomal subunits prior to initiation.
Abbreviation	Recombinant Human EIF3F protein, partial
Storage	The shelf life is related to many factors, storage state, buffer ingredients, storage temperature and the stability of the protein itself. Generally, the shelf life of liquid form is 6 months at -20°C/-80°C. The shelf life of lyophilized form is 12 months at -20°C/-80°C.
Uniprot No.	O00303
Alias	Deubiquitinating enzyme eIF3f (EC:3.4.19.12)
Product Type	Recombinant Protein
Immunogen Species	Homo sapiens (Human)
Purity	Greater than 90% as determined by SDS-PAGE.
Sequence	MATPAVPVSAPPATPTPVPAAPASVPAPTPAPAAAPVPAAPASSSDPAAAA AATAAPGQTPASAQAPAQTPAPALPGPALPGPFPGGRVRLHPVILASIVDSY ERRNEGAARVIGTLLGTVDKHSVEVTNCFSPHNESEDEVAVDMEFAKNMYE LHKKVSPNELILGWYATGHDITEHSVLIHEYYSREAPNPIHLTVDTSLQNGRMSI KAYVSTLMGVPGRMTMGVMFTPLTVKYAYYDTERIGVDLIMKTCFSPNRVIGLSS DLQQVGGASARIQDALSTVLQYAEDVLSGKVSADNTVGRFLMSLVNQVPKIVP DDF
Research Area	Metabolism
Source	E.coli
Target Names	EIF3F
Expression Region	1-323aa
Notes	Repeated freezing and thawing is not recommended. Store working aliquots at 4°C for up to one week.
Tag Info	N-terminal GST-tagged
Mol. Weight	60.7kDa
Protein Length	Partial



Image



(Tris-Glycine gel) Discontinuous SDS-PAGE (reduced) with 5% enrichment gel and 15% separation gel.

Reconstitution

We recommend that this vial be briefly centrifuged prior to opening to bring the contents to the bottom. Please reconstitute protein in deionized sterile water to a concentration of 0.1-1.0 mg/mL. We recommend to add 5-50% of glycerol (final concentration) and aliquot for long-term storage at -20°C/-80°C. Our default final concentration of glycerol is 50%. Customers could use it as reference.

Shelf Life

The shelf life is related to many factors, storage state, buffer ingredients, storage temperature and the stability of the protein itself. Generally, the shelf life of liquid form is 6 months at -20°C/-80°C. The shelf life of lyophilized form is 12 months at -20°C/-80°C.