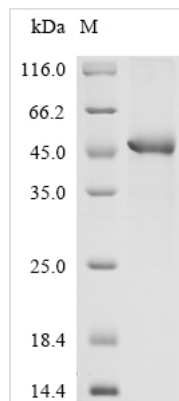




Recombinant Human Extracellular matrix protein 1 (ECM1), partial

Product Code	CSB-EP007383HU1
Abbreviation	Recombinant Human ECM1 protein, partial
Storage	The shelf life is related to many factors, storage state, buffer ingredients, storage temperature and the stability of the protein itself. Generally, the shelf life of liquid form is 6 months at -20°C/-80°C. The shelf life of lyophilized form is 12 months at -20°C/-80°C.
Uniprot No.	Q16610
Form	Liquid or Lyophilized powder
Storage Buffer	If the delivery form is liquid, the default storage buffer is Tris/PBS-based buffer, 5%-50% glycerol. If the delivery form is lyophilized powder, the buffer before lyophilization is Tris/PBS-based buffer, 6% Trehalose.
Product Type	Recombinant Protein
Immunogen Species	Homo sapiens (Human)
Purity	Greater than 85% as determined by SDS-PAGE.
Sequence	HPPSPTRDECFARRAPYPNYDRDILTIDIGRVTPNLMGHL CGNQRVLT KHKHIP GLIHNM TARCCDLPFPEQACCAEEEEKLTFINDLCGPRRNIWRDPALCCYLSPG DEQVNCFNINYLRNVALVSGDTENAKGQGEGSGTGGTNISSTSEPKKE
Research Area	Immunology
Source	E.coli
Target Names	ECM1
Expression Region	386-540aa
Notes	Repeated freezing and thawing is not recommended. Store working aliquots at 4°C for up to one week.
Tag Info	N-terminal 10xHis-GST-tagged and C-terminal Myc-tagged
Mol. Weight	52.4 kDa
Protein Length	Partial
Image	



(Tris-Glycine gel) Discontinuous SDS-PAGE (reduced) with 5% enrichment gel and 15% separation gel.

Description

The recombinant Human ECM1 protein expression involves the transfection of e.coli cells with a DNA expression vector containing the gene encoding the protein of interest (386-540aa). Following transfection, the cells are cultured to induce the expression of the desired protein. The protein is equipped with a N-terminal 10xHis-GST tag and C-terminal Myc tag. The recombinant Human ECM1 protein is collected and purified from the cell lysate through affinity purification, achieving a purity greater than 85%, as determined by SDS-PAGE.

Reconstitution

We recommend that this vial be briefly centrifuged prior to opening to bring the contents to the bottom. Please reconstitute protein in deionized sterile water to a concentration of 0.1-1.0 mg/mL. We recommend to add 5-50% of glycerol (final concentration) and aliquot for long-term storage at -20°C/-80°C. Our default final concentration of glycerol is 50%. Customers could use it as reference.

Shelf Life

The shelf life is related to many factors, storage state, buffer ingredients, storage temperature and the stability of the protein itself. Generally, the shelf life of liquid form is 6 months at -20°C/-80°C. The shelf life of lyophilized form is 12 months at -20°C/-80°C.