

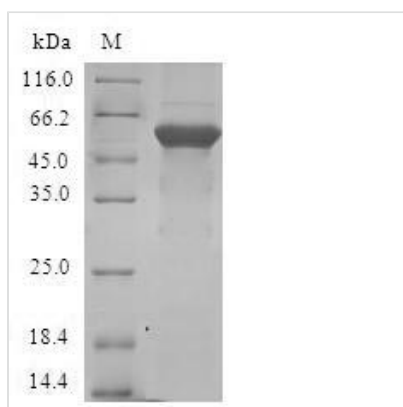


Recombinant Human Transcription factor E2F6 (E2F6)

Product Code	CSB-EP007347HU
Relevance	Inhibitor of E2F-dependent transcription. Binds DNA cooperatively with DP proteins through the E2 recognition site, 5'-TTTC[CG]CGC-3'. Has a preference for the 5'-TTTCCCGC-3' E2F recognition site. E2F6 lacks the transcriptional activation and pocket protein binding domains. Appears to regulate a subset of E2F-dependent genes whose products are required for entry into the cell cycle but not for normal cell cycle progression. May silence expression via the recruitment of a chromatin remodeling complex containing histone H3-K9 methyltransferase activity. Overexpression delays the exit of cells from the S-phase.
Abbreviation	Recombinant Human E2F6 protein
Storage	The shelf life is related to many factors, storage state, buffer ingredients, storage temperature and the stability of the protein itself. Generally, the shelf life of liquid form is 6 months at -20°C/-80°C. The shelf life of lyophilized form is 12 months at -20°C/-80°C.
Uniprot No.	O75461
Product Type	Recombinant Protein
Immunogen Species	Homo sapiens (Human)
Purity	Greater than 90% as determined by SDS-PAGE.
Sequence	MSQQRPAKRLPSLLLDPTTEETVRRRCRDPINVEGLLPKIRINLEDNVQYVSMR KALKVKRPRFDVSLVYLTRKFMDLVRSAPGGILDNLKVATKLGVRKRRVYDITN VLDGIDLVEKKSKNHIRWIGSDLSNFGAVPQQKKLQEELSDLSAMEDALDELIK DCAQQLFELTDDKENERLAYVTYQDIHSIQAFHEQIVIAVKAPAETRLDVPAPR EDSITVHIRSTNGPIDVYLCEVEQQQTSNKRSEGVGTSSSESTHPEGPEEEEN PQQSEELLEVS
Research Area	Epigenetics and Nuclear Signaling
Source	E.coli
Target Names	E2F6
Protein Names	Recommended name: Transcription factor E2F6 Short name= E2F-6
Expression Region	1-281aa
Notes	Repeated freezing and thawing is not recommended. Store working aliquots at 4°C for up to one week.
Tag Info	N-terminal GST-tagged
Mol. Weight	58.8kDa
Protein Length	Full Length



Image



(Tris-Glycine gel) Discontinuous SDS-PAGE (reduced) with 5% enrichment gel and 15% separation gel.

Reconstitution

We recommend that this vial be briefly centrifuged prior to opening to bring the contents to the bottom. Please reconstitute protein in deionized sterile water to a concentration of 0.1-1.0 mg/mL. We recommend to add 5-50% of glycerol (final concentration) and aliquot for long-term storage at -20°C/-80°C. Our default final concentration of glycerol is 50%. Customers could use it as reference.

Shelf Life

The shelf life is related to many factors, storage state, buffer ingredients, storage temperature and the stability of the protein itself. Generally, the shelf life of liquid form is 6 months at -20°C/-80°C. The shelf life of lyophilized form is 12 months at -20°C/-80°C.