

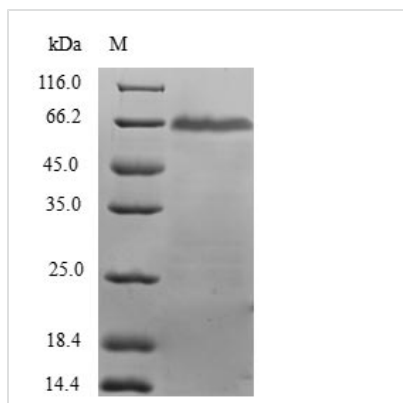


Recombinant Human Dehydrodolichyl diphosphate synthase (DHDDS)

Product Code	CSB-EP006845HU
Relevance	With DHDDS, forms the dehydrodolichyl diphosphate synthase (DDS) complex, an essential component of the dolichol monophosphate (Dol-P) biosynthetic machinery. Adds multiple copies of isopentenyl pyrophosphate (IPP) to farnesyl pyrophosphate (FPP) to produce dehydrodolichyl diphosphate (Dedol-PP), a precursor of dolichol which is utilized as a sugar carrier in protein glycosylation in the endoplasmic reticulum (ER). Regulates the glycosylation and stability of nascent NPC2, thereby promoting trafficking of LDL-derived cholesterol.
Abbreviation	Recombinant Human DHDDS protein
Storage	The shelf life is related to many factors, storage state, buffer ingredients, storage temperature and the stability of the protein itself. Generally, the shelf life of liquid form is 6 months at -20°C/-80°C. The shelf life of lyophilized form is 12 months at -20°C/-80°C.
Uniprot No.	Q86SQ9
Alias	Cis-isoprenyltransferase
Product Type	Recombinant Protein
Immunogen Species	Homo sapiens (Human)
Purity	Greater than 90% as determined by SDS-PAGE.
Sequence	MSWIKEGELSLWERFCANIIKAGPMPKHIAFIMDGNRRYAKKCQVERQEGHSQ GFNKLAEATLRWCLNLGILEVTVYAFSIFNFKRSKSEVDGLMDLARQKFSRLME EKEKLQKHGVCIRVLGDLHLLPLDLQELIAQAVQATKNYNKCFLNVCFAFYTSTRH EISNAVREMAWGVEQGLLDPSDISESLDKCLYTNRSPHPDILIRTSGEVRLSD FLLWQTSHSCLVFQPVLPWEYTFWNLFMAILQFQMNHSVLQKARDMYAEERK RQQLERDQATVTEQLLREGLQASGDAQLRRLHKLKSARREERVQGGFLQALE LKRADWLARLGTASA
Research Area	others
Source	E.coli
Target Names	DHDDS
Protein Names	Recommended name: Dehydrodolichyl diphosphate synthase Short name= Dedol-PP synthase EC= 2.5.1.-
Expression Region	1-333aa
Notes	Repeated freezing and thawing is not recommended. Store working aliquots at 4°C for up to one week.
Tag Info	N-terminal GST-tagged
Mol. Weight	65.7kDa


Protein Length

Full Length

Image


(Tris-Glycine gel) Discontinuous SDS-PAGE (reduced) with 5% enrichment gel and 15% separation gel.

Reconstitution

We recommend that this vial be briefly centrifuged prior to opening to bring the contents to the bottom. Please reconstitute protein in deionized sterile water to a concentration of 0.1-1.0 mg/mL. We recommend to add 5-50% of glycerol (final concentration) and aliquot for long-term storage at -20°C/-80°C. Our default final concentration of glycerol is 50%. Customers could use it as reference.

Shelf Life

The shelf life is related to many factors, storage state, buffer ingredients, storage temperature and the stability of the protein itself. Generally, the shelf life of liquid form is 6 months at -20°C/-80°C. The shelf life of lyophilized form is 12 months at -20°C/-80°C.