



Recombinant Human Diacylglycerol kinase alpha (DGKA)

Product Code	CSB-EP006832HU
Relevance	Upon cell stimulation converts the second messenger diacylglycerol into phosphatidate, initiating the resynthesis of phosphatidylinositols and attenuating protein kinase C activity.
Abbreviation	Recombinant Human DGKA protein
Storage	The shelf life is related to many factors, storage state, buffer ingredients, storage temperature and the stability of the protein itself. Generally, the shelf life of liquid form is 6 months at -20°C/-80°C. The shelf life of lyophilized form is 12 months at -20°C/-80°C.
Uniprot No.	P23743
Alias	80 kDa diacylglycerol kinase Diglyceride kinase alpha
Product Type	Recombinant Protein
Immunogen Species	Homo sapiens (Human)
Purity	Greater than 90% as determined by SDS-PAGE.
Sequence	MAKERGLISPSDFAQLQKYMESTKKVSDVLKLFEDGEMAKYVQGDAIGYEGF QQFLKIYLEVDNVPRHLSLALFQSFETGHCLNETNVTKDVVCLNDVSCYFSLLE GGRPEDKLEFTFKLYDTRNGILDSSEVDKIIQMMRVAEYLDWDVSELRPILQ EMMKEIDYDGSGSVSQAEWVRAGATTVPLLVLGLEM TLKDDGQHMWRPKR FPRPVYCNLCES SIGLGKQGLSCNLCKYTVHDQCAMKALPCEVSTYAKSRKDI GVQSHVWVRGGCESGRCDRCQKKIRIYHSLTGLHCVWCHLEIHDDCLQAVG HECDCGLLRDHILPPSSIYPSVLASGPDRKNSKTSQKTMDLNLSTSEALRIDP VPNTHPLLVFVNPKSGGKQGRVLWKFQYILNPRQVFNLLKDGPEIGLRLFKD VPDSRILVCGGDGTGVWILETIDKANLPVLPVAVLPLGTGNDLARCLRWGGG YEGQNLAKILKDLEMSKVHMDRWSVEVIPQQTEEKSDPVPFQIINNYFSIGVD ASIAHRFHIMREKYPEKFNSRMKNKLWYFEFATSESI FSTCKKLEESLTVEICGK PLDLSNLSLEGIAVLNIPSMHGGSNLWGDTRRPHGDIYGINQALGATAKVITDP DILKTCVPDLSDKRLEVVGLEGAIE MGQIYTKLKNAGRRLAKCSEITFHTTKTLP MQIDGEPWMQTPCTIKITHKNQMPMLMGPPPRSTNFFGFLS
Research Area	Signal Transduction
Source	E.coli
Target Names	DGKA
Protein Names	Recommended name: Diacylglycerol kinase alpha Short name= DAG kinase alpha EC= 2.7.1.107 Alternative name(s): 80 kDa diacylglycerol kinase Diglyceride kinase alpha Short name= DGK-alpha
Expression Region	1-735aa
Notes	Repeated freezing and thawing is not recommended. Store working aliquots at 4°C for up to one week.

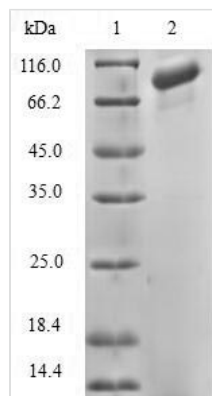


Tag Info N-terminal 6XHis-tagged

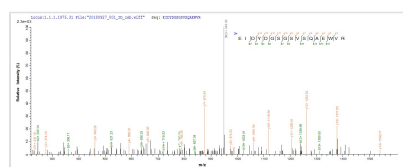
Mol. Weight 86.6kDa

Protein Length Full Length

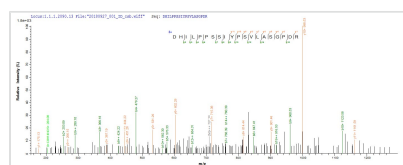
Image



(Tris-Glycine gel) Discontinuous SDS-PAGE (reduced) with 5% enrichment gel and 15% separation gel.



Based on the SEQUEST from database of E.coli host and target protein, the LC-MS/MS Analysis result of CSB-EP006832HU could indicate that this peptide derived from E.coli-expressed Homo sapiens (Human) DGKA.



Based on the SEQUEST from database of E.coli host and target protein, the LC-MS/MS Analysis result of CSB-EP006832HU could indicate that this peptide derived from E.coli-expressed Homo sapiens (Human) DGKA.

Reconstitution

We recommend that this vial be briefly centrifuged prior to opening to bring the contents to the bottom. Please reconstitute protein in deionized sterile water to a concentration of 0.1-1.0 mg/mL. We recommend to add 5-50% of glycerol (final concentration) and aliquot for long-term storage at -20°C/-80°C. Our default final concentration of glycerol is 50%. Customers could use it as reference.

Shelf Life

The shelf life is related to many factors, storage state, buffer ingredients, storage temperature and the stability of the protein itself. Generally, the shelf life of liquid form is 6 months at -20°C/-80°C. The shelf life of lyophilized form is 12 months at -20°C/-80°C.