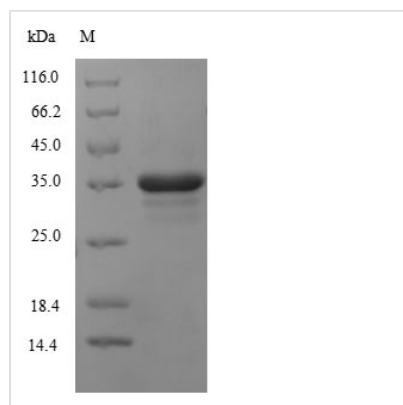




Recombinant Human Cytochrome b-245 heavy chain (CYBB), partial

Product Code	CSB-EP006325HU1
Relevance	Critical component of the membrane-bound oxidase of phagocytes that generates superoxide. It is the terminal component of a respiratory chain that transfers single electrons from cytoplasmic NADPH across the plasma membrane to molecular oxygen on the exterior. Also functions as a voltage-gated proton channel that mediates the H ⁺ currents of resting phagocytes. It participates in the regulation of cellular pH and is blocked by zinc.
Abbreviation	Recombinant Human CYBB protein, partial
Storage	The shelf life is related to many factors, storage state, buffer ingredients, storage temperature and the stability of the protein itself. Generally, the shelf life of liquid form is 6 months at -20°C/-80°C. The shelf life of lyophilized form is 12 months at -20°C/-80°C.
Uniprot No.	P04839
Alias	CGD91-phox Cytochrome b(558) subunit beta
Product Type	Recombinant Protein
Immunogen Species	Homo sapiens (Human)
Purity	Greater than 90% as determined by SDS-PAGE.
Sequence	ERLVRFWRSQQKVVTIKVVTHTPFKTIELQMKKKGFKMEVGQYIFVKCPKVS KL EWHPFTLTSAPEEDFFSIHIRIVGDWTEGLFNACGCDKQEFQDAWKLPKIAVD GPFGTASEDVFSYEVVMLVGAGIGVTPFASILKSVWYKYCNNATNLKLKKIYFY WLCRDTHAFEFWADLLQLLESQMQERNNAGFLSYNIYLTGWDESQANHFAVH HDEEKDVITGLKQKTLYGRPNWDNEFKTIASQHPNTRIGVFLCGPEALAEATLSK QSSNSESGPRGVHFIFNKENF
Research Area	Immunology
Source	E.coli
Target Names	CYBB
Expression Region	283-570aa
Notes	Repeated freezing and thawing is not recommended. Store working aliquots at 4°C for up to one week.
Tag Info	N-terminal 6xHis-tagged
Mol. Weight	37.2kDa
Protein Length	Partial
Image	



(Tris-Glycine gel) Discontinuous SDS-PAGE (reduced) with 5% enrichment gel and 15% separation gel.

Description

The Human CYBB protein's gene (283-570aa) is inserted into a plasmid vector, forming recombinant plasmid, which is introduced into e.coli cells. e.coli cells surviving in the presence of a specific antibiotic are selected and then cultured under conditions promoting the expression of the gene of interest. The protein features a N-terminal 6xHis tag fusion. After expression, the recombinant Human CYBB protein is isolated and purified from the cell lysate through affinity purification. Denaturing SDS-PAGE is utilized to resolve the resulting recombinant protein, revealing a purity exceeding 90%.

Reconstitution

We recommend that this vial be briefly centrifuged prior to opening to bring the contents to the bottom. Please reconstitute protein in deionized sterile water to a concentration of 0.1-1.0 mg/mL. We recommend to add 5-50% of glycerol (final concentration) and aliquot for long-term storage at -20°C/-80°C. Our default final concentration of glycerol is 50%. Customers could use it as reference.

Shelf Life

The shelf life is related to many factors, storage state, buffer ingredients, storage temperature and the stability of the protein itself. Generally, the shelf life of liquid form is 6 months at -20°C/-80°C. The shelf life of lyophilized form is 12 months at -20°C/-80°C.