



Recombinant Mouse Stromal cell-derived factor 1 (Cxcl12), partial

Product Code	CSB-EP006242MO1
Relevance	<p>Choattractant active on T-lymphocytes, monocytes, but not neutrophils. Activates the C-X-C chokine receptor CXCR4 to induce a rapid and transient rise in the level of intracellular calcium ions and chotaxis. Also binds to atypical chokine receptor ACKR3, which activates the beta-arrestin pathway and acts as a scavenger receptor for SDF-1. Acts as a positive regulator of monocyte migration and a negative regulator of monocyte adhesion via the LYN kinase. Stimulates migration of monocytes and T-lymphocytes through its receptors, CXCR4 and ACKR3, and decreases monocyte adherence to surfaces coated with ICAM-1, a ligand for beta-2 integrins. SDF1A/CXCR4 signaling axis inhibits beta-2 integrin LFA-1 mediated adhesion of monocytes to ICAM-1 through LYN kinase. Plays a protective role after myocardial infarction. Induces down-regulation and internalization of ACKR3 expressed in various cells . Has several critical functions during bryonic development; required for B-cell lymphopoiesis, myelopoiesis in bone marrow and heart ventricular septum formation.Stimulates the proliferation of bone marrow-derived b progenitor cells in the presence of IL-7 as well as growth of the stromal cell-dependent B-cell clone DW34 cells.</p>
Abbreviation	Recombinant Mouse Cxcl12 protein, partial
Storage	The shelf life is related to many factors, storage state, buffer ingredients, storage temperature and the stability of the protein itself. Generally, the shelf life of liquid form is 6 months at -20°C/-80°C. The shelf life of lyophilized form is 12 months at -20°C/-80°C.
Uniprot No.	P40224
Alias	12-O-tetradecanoylphorbol 13-acetate repressed protein 1 ;TPAR1C-X-C motif chemokine 12;Pre-B cell growth-stimulating factor ;PBSFThymic lymphoma cell-stimulating factor ;TLSF
Product Type	Recombinant Protein
Immunogen Species	Mus musculus (Mouse)
Purity	Greater than 90% as determined by SDS-PAGE.
Sequence	KPVLSYRCPGRFFESHIRANVKHLKILNTPNCALQIVARLKNNNRQVCIDPKL KWIQEYLEKALNK
Research Area	Others
Source	E.coli
Target Names	Cxcl12
Expression Region	22-89aa
Notes	Repeated freezing and thawing is not recommended. Store working aliquots at 4°C for up to one week.

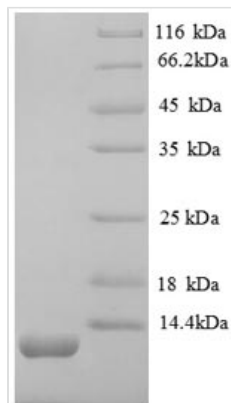


Tag Info N-terminal 6xHis-tagged

Mol. Weight 12.0kDa

Protein Length Partial

Image



(Tris-Glycine gel) Discontinuous SDS-PAGE (reduced) with 5% enrichment gel and 15% separation gel.

Reconstitution We recommend that this vial be briefly centrifuged prior to opening to bring the contents to the bottom. Please reconstitute protein in deionized sterile water to a concentration of 0.1-1.0 mg/mL. We recommend to add 5-50% of glycerol (final concentration) and aliquot for long-term storage at -20°C/-80°C. Our default final concentration of glycerol is 50%. Customers could use it as reference.

Shelf Life The shelf life is related to many factors, storage state, buffer ingredients, storage temperature and the stability of the protein itself. Generally, the shelf life of liquid form is 6 months at -20°C/-80°C. The shelf life of lyophilized form is 12 months at -20°C/-80°C.