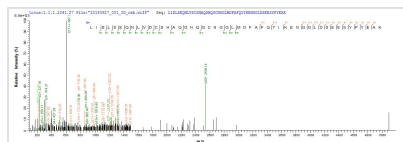




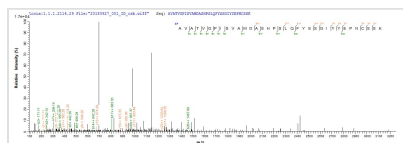
# Recombinant Mouse Cathepsin L1 (Ctsl1), partial

<b>Product Code</b>	CSB-EP006193MO
<b>Abbreviation</b>	Recombinant Mouse Ctsl protein, partial
<b>Storage</b>	The shelf life is related to many factors, storage state, buffer ingredients, storage temperature and the stability of the protein itself. Generally, the shelf life of liquid form is 6 months at -20°C/-80°C. The shelf life of lyophilized form is 12 months at -20°C/-80°C.
<b>Uniprot No.</b>	P06797
<b>Product Type</b>	Recombinant Protein
<b>Immunogen Species</b>	Mus musculus (Mouse)
<b>Purity</b>	Greater than 85% as determined by SDS-PAGE.
<b>Sequence</b>	IPKSVDWREKGCVTPVKNQGGCGSCWAFSASGCLEGQMFLKTGKLISLSEQN LVDCSHAQGNQGCNGGLMDFAFQYIKENGGLDSEESYPYEAKDGSKYRAE FAVANDTGFVDIPQQEKALMKAVATVGPISVAMDASHPSLQFYSSGIYYEPNC SSKNLDHGVLLVGYGYEGT
<b>Research Area</b>	Signal Transduction
<b>Source</b>	E.coli
<b>Target Names</b>	Ctsl
<b>Protein Names</b>	Recommended name: Cathepsin L1 EC= 3.4.22.15Alternative name(s): Major excreted protein Short name= MEP p39 cysteine proteinaseCleaved into the following 2 chains: 1. Cathepsin L1 heavy chain 2. Cathepsin L1 light chain
<b>Expression Region</b>	114-288aa
<b>Notes</b>	Repeated freezing and thawing is not recommended. Store working aliquots at 4°C for up to one week.
<b>Tag Info</b>	N-terminal 6xHis-taggedand C-terminal Myc-tagged
<b>Mol. Weight</b>	26.2 kDa
<b>Protein Length</b>	Partial

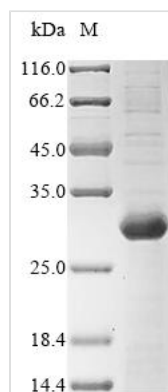
## Image



Based on the SEQUEST from database of E.coli host and target protein, the LC-MS/MS Analysis result of CSB-EP006193MO could indicate that this peptide derived from E.coli-expressed Mus musculus (Mouse) Ctsl.



Based on the SEQUEST from database of E.coli host and target protein, the LC-MS/MS Analysis result of CSB-EP006193MO could indicate that this peptide derived from E.coli-expressed Mus musculus (Mouse) Ctsl.



(Tris-Glycine gel) Discontinuous SDS-PAGE (reduced) with 5% enrichment gel and 15% separation gel.

## Description

Expand your research horizon with our Recombinant Mouse Ctsl, also known as Procathepsin L or Cathepsin L1. As a key player in signal transduction, this protein offers a window into the intricate network of cellular communications. Recombinantly produced in E.coli, it stands as an essential asset for your experimental inquiries.

The protein exhibits a partial length (114-288aa) and is expressed with a dual tag: N-terminal 6xHis-tag and C-terminal Myc-tag, which ensure its efficient purification and high stability. With a purity greater than 85% as determined by SDS-PAGE, our Recombinant Mouse Ctsl meets the demands of scientific rigor. You have the flexibility to choose between a liquid form or a lyophilized powder, depending on your research needs and workflow.

## Reconstitution

We recommend that this vial be briefly centrifuged prior to opening to bring the contents to the bottom. Please reconstitute protein in deionized sterile water to a concentration of 0.1-1.0 mg/mL. We recommend to add 5-50% of glycerol (final concentration) and aliquot for long-term storage at -20°C/-80°C. Our default final concentration of glycerol is 50%. Customers could use it as reference.

## Shelf Life

The shelf life is related to many factors, storage state, buffer ingredients, storage temperature and the stability of the protein itself. Generally, the shelf life of liquid form is 6 months at -20°C/-80°C. The shelf life of lyophilized form is 12 months at -20°C/-80°C.