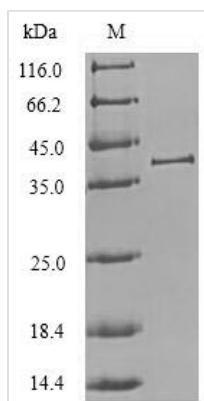




Recombinant Chlorocebus aethiops Cathepsin L1 (CTSL1), partial

Product Code	CSB-EP006193DSU
Relevance	Important for the overall degradation of proteins in lysosomes.
Abbreviation	Recombinant Chlorocebus aethiops CTSL protein, partial
Storage	The shelf life is related to many factors, storage state, buffer ingredients, storage temperature and the stability of the protein itself. Generally, the shelf life of liquid form is 6 months at -20°C/-80°C. The shelf life of lyophilized form is 12 months at -20°C/-80°C.
Uniprot No.	Q9GKL8
Alias	Cathepsin LMajor excreted protein ;MEP
Product Type	Recombinant Protein
Immunogen Species	Chlorocebus aethiops (Green monkey) (Cercopithecus aethiops)
Purity	Greater than 90% as determined by SDS-PAGE.
Sequence	APRSVDWREKGYVTPVKNQGQCGSCWAFSATGALEGQMFRKTGKLVSLSE QNLVDCSGPQGNEGCNGGLMDYAFQYVADNGGLDSEESYPYEATEESCKYN PEYSVANDTGFVDIPKQEKALMKAVATVGPISVAIDAGHESFMFYKEGIYFEPD CSSEDMDHGVLLVVGYGFESESDNSKYWLVKNSWGEEWGMGGYIKMAKDR RNHCGIASAASYPTV
Research Area	Others
Source	E.coli
Target Names	CTSL
Expression Region	114-333aa
Notes	Repeated freezing and thawing is not recommended. Store working aliquots at 4°C for up to one week.
Tag Info	N-terminal 6xHis-SUMO-tagged
Mol. Weight	40.1kDa
Protein Length	Partial
Image	



(Tris-Glycine gel) Discontinuous SDS-PAGE (reduced) with 5% enrichment gel and 15% separation gel.

Reconstitution

We recommend that this vial be briefly centrifuged prior to opening to bring the contents to the bottom. Please reconstitute protein in deionized sterile water to a concentration of 0.1-1.0 mg/mL. We recommend to add 5-50% of glycerol (final concentration) and aliquot for long-term storage at -20°C/-80°C. Our default final concentration of glycerol is 50%. Customers could use it as reference.

Shelf Life

The shelf life is related to many factors, storage state, buffer ingredients, storage temperature and the stability of the protein itself. Generally, the shelf life of liquid form is 6 months at -20°C/-80°C. The shelf life of lyophilized form is 12 months at -20°C/-80°C.