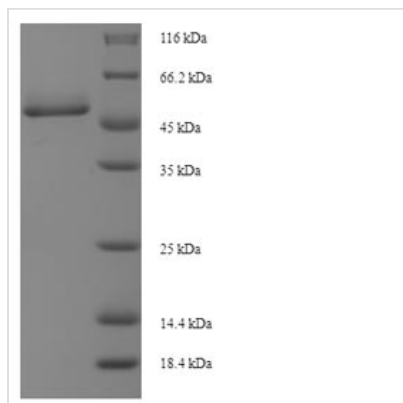


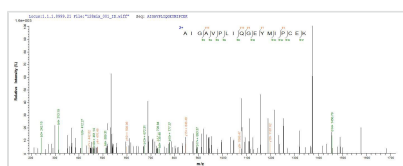


# Recombinant Cricetulus griseus Cathepsin D (Ctsd), partial

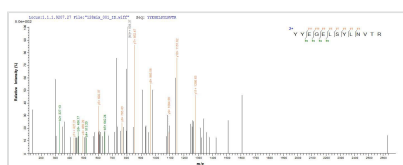
Product Code	CSB-EP006187DXU
Abbreviation	Recombinant Cricetulus griseus NEU2 protein, partial
Storage	The shelf life is related to many factors, storage state, buffer ingredients, storage temperature and the stability of the protein itself. Generally, the shelf life of liquid form is 6 months at -20°C/-80°C. The shelf life of lyophilized form is 12 months at -20°C/-80°C.
Uniprot No.	G3I4W7
Product Type	Recombinant Proteins
Immunogen Species	Cricetulus griseus (Chinese hamster) (Cricetulus barabensis griseus)
Purity	Greater than 90% as determined by SDS-PAGE.
Sequence	GPVSELLKNYLDAQYYGEIGIGTPQCFTTVVFDTGSSNLWVPSIHCKLLDIACW IHHKYNSGKSSTFVKNGTSFDIHYGSGSLSGYLSQDTVSVPCCKSEQPGGLKVE KQIFGEAIKQPGITFIAAKFDGILGMGYPSISVNNVVPVFDNLMQQKLVEKNIFS FLNRDPTGQPGGELMLGGIDSKYYEGELSYLVNTRKAYWQVHMDQLDVANG LTLCKGGCEAIVDTGTSLLVGPVDEVKELQKAIGAVPLIQGEYMIPCEKVSSLPS VTLKLGKDYELSPSKYVLKVSQGGKTICLSGFMGMDIPPPSGPLWILGDVFIG TYYTVFDRDNNRVGFAKAATL
Research Area	Others
Source	E.coli
Target Names	Ctsd
Expression Region	65-408aa
Notes	Repeated freezing and thawing is not recommended. Store working aliquots at 4°C for up to one week.
Tag Info	N-terminal 6xHis-SUMO-tagged
Mol. Weight	53.3kDa
Protein Length	Partial
Image	



(Tris-Glycine gel) Discontinuous SDS-PAGE (reduced) with 5% enrichment gel and 15% separation gel.



Based on the SEQUEST from database of E.coli host and target protein, the LC-MS/MS Analysis result of CSB-EP006187DXU could indicate that this peptide derived from E.coli-expressed *Cricetulus griseus* (Chinese hamster) (*Cricetulus barabensis griseus*) CTSD.



Based on the SEQUEST from database of E.coli host and target protein, the LC-MS/MS Analysis result of CSB-EP006187DXU could indicate that this peptide derived from E.coli-expressed *Cricetulus griseus* (Chinese hamster) (*Cricetulus barabensis griseus*) CTSD.

## Description

CUSABIO synthesized the recombinant gene by integrating the N-terminal 6xHis-SUMO tag sequence into the targeted gene encoding the 65-408aa of the *Cricetulus griseus* CTSD. The synthesized gene was subsequently cloned into an expression vector. After cloning, the expression vector was introduced into the E.coli for expression. The product was purified to obtain the recombinant *Cricetulus griseus* CTSD protein carrying N-terminal 6xHis-SUMO tag. The SDS-PAGE assayed the purity of this recombinant CTSD protein greater than 90%. This CTSD protein migrated along the gel to a band of about 50 kDa molecular weight.

Cathepsin D is a protein encoding by a gene named H671\_3g9701 in chinese hamster or a gene named CTSD in human. Cathepsin D is an acid lysosomal aspartyl protease composed of a protein dimer of disulfide-linked heavy and light chains, both produced from a single protein precursor. Cathepsin D can dissolve basement membrane in an acidic environment, degrade extracellular matrix and connective tissue, and is related to aggressive biological behavior. The specificity of cathepsin D is similar topepsin A, but it can not cleave the 4-Gln-I-His-5 bond in B chain of insulin. Studies have confirmed that Cathepsin D plays an important role in tumorigenesis and development.

## Shelf Life

The shelf life is related to many factors, storage state, buffer ingredients, storage temperature and the stability of the protein itself.

Generally, the shelf life of liquid form is 6 months at -20°C/-80°C. The shelf life of lyophilized form is 12 months at -20°C/-80°C.