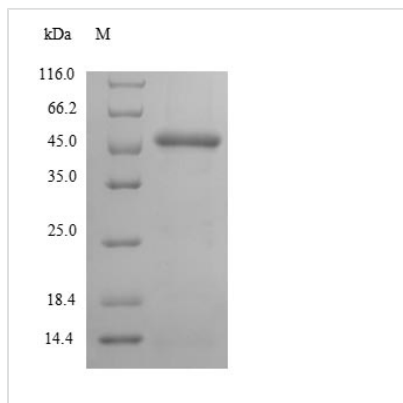


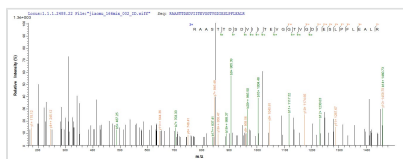


Recombinant Streptococcus pyogenes serotype M1 CTP synthase (pyrG), partial

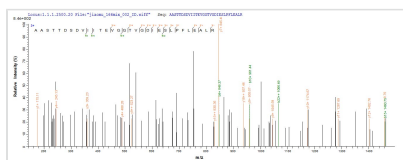
Product Code	CSB-EP006176SMT
Relevance	Catalyzes the ATP-dependent amination of UTP to CTP with either L-glutamine or ammonia as the source of nitrogen. Regulates intracellular CTP levels through interactions with the four ribonucleotide triphosphates.
Abbreviation	Recombinant Streptococcus pyogenes serotype M1 pyrG protein, partial
Storage	The shelf life is related to many factors, storage state, buffer ingredients, storage temperature and the stability of the protein itself. Generally, the shelf life of liquid form is 6 months at -20°C/-80°C. The shelf life of lyophilized form is 12 months at -20°C/-80°C.
Uniprot No.	P65925
Alias	Cytidine 5'-triphosphate synthase Cytidine triphosphate synthetase
Product Type	Recombinant Protein
Immunogen Species	Streptococcus pyogenes serotype M1
Purity	Greater than 85% as determined by SDS-PAGE.
Sequence	MTKYIFVTGGVVSSIGKGIVAASLGRLLKNRGLKVTIQKFDPYINIDPGTMSPYQ HGEVYVTDDGAETDLDLGHYERFIDINLNKYSNVTTGKIYSEVLRKERKGEYLG ATVQVIPHITDALKEKIKRAASTTDSVDIITEVGGTVGDIESLPFLEALRQMKADV GSENVMYIHTTLLPYLKAAGEMKTKPTQHSVKELRGLGIQPNMLVIRTEEPVEQ GIKNKLAQFCDVNSEAVIESRDVEHLYQIPLNLQAQSMQIVCDHLKL
Research Area	others
Source	E.coli
Target Names	pyrG
Protein Names	Recommended name: CTP synthase EC= 6.3.4.2 Alternative name(s): CTP synthetase UTP--ammonia ligase
Expression Region	1-267aa
Notes	Repeated freezing and thawing is not recommended. Store working aliquots at 4°C for up to one week.
Tag Info	N-terminal 10xHis-SUMO-tagged and C-terminal Myc-tagged
Mol. Weight	49.6kDa
Protein Length	Partial
Image	



(Tris-Glycine gel) Discontinuous SDS-PAGE (reduced) with 5% enrichment gel and 15% separation gel.



Based on the SEQUEST from database of E.coli host and target protein, the LC-MS/MS Analysis result of CSB-EP006176SMT could indicate that this peptide derived from E.coli-expressed Streptococcus pyogenes serotype M1 pyrG.



Based on the SEQUEST from database of E.coli host and target protein, the LC-MS/MS Analysis result of CSB-EP006176SMT could indicate that this peptide derived from E.coli-expressed Streptococcus pyogenes serotype M1 pyrG.

Reconstitution

We recommend that this vial be briefly centrifuged prior to opening to bring the contents to the bottom. Please reconstitute protein in deionized sterile water to a concentration of 0.1-1.0 mg/mL. We recommend to add 5-50% of glycerol (final concentration) and aliquot for long-term storage at -20°C/-80°C. Our default final concentration of glycerol is 50%. Customers could use it as reference.

Shelf Life

The shelf life is related to many factors, storage state, buffer ingredients, storage temperature and the stability of the protein itself.

Generally, the shelf life of liquid form is 6 months at -20°C/-80°C. The shelf life of lyophilized form is 12 months at -20°C/-80°C.