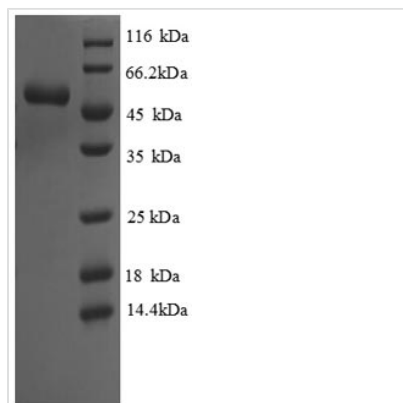




Recombinant *Saccharomyces cerevisiae* Cystathionine gamma-lyase (CYS3), partial

Product Code	CSB-EP006160SVG
Abbreviation	Recombinant <i>Saccharomyces cerevisiae</i> CYS3 protein, partial
Storage	The shelf life is related to many factors, storage state, buffer ingredients, storage temperature and the stability of the protein itself. Generally, the shelf life of liquid form is 6 months at -20°C/-80°C. The shelf life of lyophilized form is 12 months at -20°C/-80°C.
Uniprot No.	P31373
Alias	Gamma-cystathionase;Sulfur transfer protein 1
Product Type	Recombinant Protein
Immunogen Species	<i>Saccharomyces cerevisiae</i> (strain ATCC 204508 / S288c) (Baker's yeast)
Purity	Greater than 90% as determined by SDS-PAGE.
Sequence	TLQESDKFATKAIHAGEHVDVHGSVIEPISLSTTFKQSSPANPIGTYEYSRSQN PNRENLERAVAALENAQYGLAFSSGSATTATILQSLPQGSHAVSIGDVYGGTH RYFTKVANAAGVETSFTNDLLNDLPQLIKENTKLWVIETPTNPTLKVTDIQKVAD LIKKHAAGQDVILVVDNTFLSPYISNPLNFGADIVVHSATKYINGHSDVVLGVLA TNNKPLYERLQFLQNAIGAIPSPFDAWLTHRGLKTLHLRVRQAALSANKIAEFL AADKENVVAVNYPGLKTHPNYDVVLKQHRDALGGGMISFRIKGGAEAAASKFAS STRLFTLAESLGGIESLLEVPVMTHGGIPKEAREASGVFDDLVRLISVGIEDTDD LLEDIKQALKQ
Research Area	Others
Source	E.coli
Target Names	CYS3
Expression Region	2-391aa
Notes	Repeated freezing and thawing is not recommended. Store working aliquots at 4°C for up to one week.
Tag Info	N-terminal 6xHis-tagged
Mol. Weight	46.1kDa
Protein Length	Partial
Image	



(Tris-Glycine gel) Discontinuous SDS-PAGE (reduced) with 5% enrichment gel and 15% separation gel.

Reconstitution

We recommend that this vial be briefly centrifuged prior to opening to bring the contents to the bottom. Please reconstitute protein in deionized sterile water to a concentration of 0.1-1.0 mg/mL. We recommend to add 5-50% of glycerol (final concentration) and aliquot for long-term storage at -20°C/-80°C. Our default final concentration of glycerol is 50%. Customers could use it as reference.

Shelf Life

The shelf life is related to many factors, storage state, buffer ingredients, storage temperature and the stability of the protein itself. Generally, the shelf life of liquid form is 6 months at -20°C/-80°C. The shelf life of lyophilized form is 12 months at -20°C/-80°C.