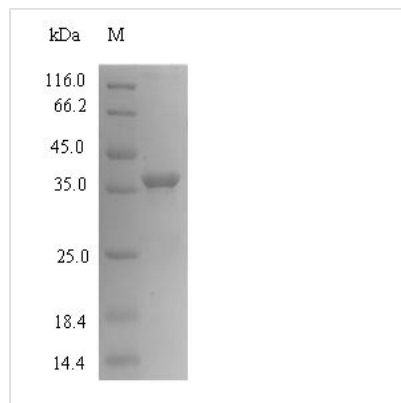




Recombinant Human Cancer/testis antigen 2 (CTAG2)

Product Code	CSB-EP006127HU
Abbreviation	Recombinant Human CTAG2 protein
Storage	The shelf life is related to many factors, storage state, buffer ingredients, storage temperature and the stability of the protein itself. Generally, the shelf life of liquid form is 6 months at -20°C/-80°C. The shelf life of lyophilized form is 12 months at -20°C/-80°C.
Uniprot No.	O75638
Alias	Autoimmunogenic cancer/testis antigen NY-ESO-2;Cancer/testis antigen 6.2 ;CT6.2L antigen family member 1 ;LAGE-1
Product Type	Recombinant Protein
Immunogen Species	Homo sapiens (Human)
Purity	Greater than 90% as determined by SDS-PAGE.
Sequence	MQAEGQGTGGSTGDADGPGGPGIPDGPGGNAGGPGEAGATGGRGPRGAG AARASGPRGGAPRGPHGGAASAQDGRCPGARRPDSRLLQLHITMPFSSPM EAELVRRILSRDAAPLPRPGAVLKDFTVSGNLLFMSVRDQDREGAGRMRVVG WGLGSASPEGQKARDLRTPKHKVSEQRPGTPGPPPPEGAQGDGCRGVAFN VMFSAPHI
Research Area	Cancer
Source	E.coli
Target Names	CTAG2
Expression Region	1-210aa
Notes	Repeated freezing and thawing is not recommended. Store working aliquots at 4°C for up to one week.
Tag Info	N-terminal 6xHis-SUMO-tagged
Mol. Weight	37.1kDa
Protein Length	Full Length
Image	



(Tris-Glycine gel) Discontinuous SDS-PAGE (reduced) with 5% enrichment gel and 15% separation gel.

Description

To make this Recombinant Human CTAG2 protein, the CTAG2 gene was isolated at first and cloned into an expression vector. CUSABIO has built a mature recombinant protein platform. This Recombinant Human CTAG2 protein was developed in the platform. It was expressed in E.coli at the region of 1-210aa of the Human CTAG2 protein. N-terminal 6xHis-SUMO tag was fused with the expression vector for affinity and purification purposes. The purity is 90%+ determined by SDS-PAGE.

Cancer testis antigen 2 gene (CTAG2) has been identified as a potential hepatocellular carcinoma therapeutic target by hub gene screening with topological analysis. The HCC patient samples from TCGA were divided into the high and low CTAG2 expression groups based on their median value. Survival was analysed by constructing Kaplan-Meier curves (log-rank test), while Cox regression analysis was used to performed univariable and multivariable analysis. In total, 6 hub genes appeared in at least three topological analysis methods, including CTAG2. CTAG2 was regarded as the most important hub gene. According to the RNA-seq expression data of tumor tissue included in TCGA LIHC, the expression of CTAG2 was not associated with the patient gender, but was significantly associated with the patient age.

Reconstitution

We recommend that this vial be briefly centrifuged prior to opening to bring the contents to the bottom. Please reconstitute protein in deionized sterile water to a concentration of 0.1-1.0 mg/mL. We recommend to add 5-50% of glycerol (final concentration) and aliquot for long-term storage at -20°C/-80°C. Our default final concentration of glycerol is 50%. Customers could use it as reference.

Shelf Life

The shelf life is related to many factors, storage state, buffer ingredients, storage temperature and the stability of the protein itself. Generally, the shelf life of liquid form is 6 months at -20°C/-80°C. The shelf life of lyophilized form is 12 months at -20°C/-80°C.