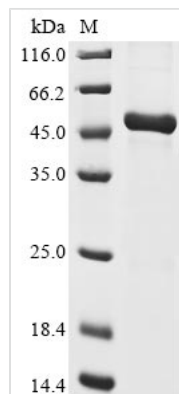




Recombinant Human Chorionic somatomammotropin hormone 2 (CSH2)

Product Code	CSB-EP006054HU
Abbreviation	Recombinant Human CSH2 protein
Storage	The shelf life is related to many factors, storage state, buffer ingredients, storage temperature and the stability of the protein itself. Generally, the shelf life of liquid form is 6 months at -20°C/-80°C. The shelf life of lyophilized form is 12 months at -20°C/-80°C.
Uniprot No.	P0DML3
Form	Liquid or Lyophilized powder
Storage Buffer	If the delivery form is liquid, the default storage buffer is Tris/PBS-based buffer, 5%-50% glycerol. If the delivery form is lyophilized powder, the buffer before lyophilization is Tris/PBS-based buffer, 6% Trehalose.
Product Type	Recombinant Protein
Immunogen Species	Homo sapiens (Human)
Purity	Greater than 85% as determined by SDS-PAGE.
Sequence	VQTVPLSRLFDHAMLQAHRAHQLAIDTYQEFETYIPKDQKYSFLHDSQTSFC FSDSIPTPSNMEETQQKSNLELLRISLLIESWLEPVRFLRSMFANNLVYDTS DDYHLLKDLEEGIQTLMGRLDGSRRTGQILKQTYSKFDTNSHNHDALLKNYG LLYCFRKDMDKVETFLRMVQCRSVEGSCGF
Research Area	Developmental Biology
Source	E.coli
Target Names	CSH2
Expression Region	27-217aa
Notes	Repeated freezing and thawing is not recommended. Store working aliquots at 4°C for up to one week.
Tag Info	N-terminal 6xHis-GST-tagged
Mol. Weight	53.8 kDa
Protein Length	Full Length of Mature Protein
Image	



(Tris-Glycine gel) Discontinuous SDS-PAGE (reduced) with 5% enrichment gel and 15% separation gel.

Description

The region for expressing recombinant Human CSH2 contains amino acids 27-217. The theoretical molecular weight of the CSH2 protein is 53.8 kDa. Expression of this CSH2 protein is conducted in e.coli. The CSH2 gene fragment has been modified by fusing the N-terminal 6xHis-GST tag, providing convenience in detecting and purifying the recombinant CSH2 protein during the following stages.

The human chorionic somatomammotropin hormone 2 (CSH2) is a glycoprotein hormone produced by the syncytiotrophoblast cells of the placenta during pregnancy. CSH2 shares structural similarities with growth hormone and prolactin. Its primary function is to regulate maternal metabolism and promote fetal growth by modulating insulin sensitivity and glucose utilization. CSH2 also plays a role in mammary gland development in preparation for lactation. During pregnancy, its levels rise steadily, peaking in the third trimester. The hormone contributes to maintaining a nutrient-rich environment for the developing fetus. Studying CSH2 provides insights into the intricate hormonal regulation crucial for successful pregnancy outcomes.

Reconstitution

We recommend that this vial be briefly centrifuged prior to opening to bring the contents to the bottom. Please reconstitute protein in deionized sterile water to a concentration of 0.1-1.0 mg/mL. We recommend to add 5-50% of glycerol (final concentration) and aliquot for long-term storage at -20°C/-80°C. Our default final concentration of glycerol is 50%. Customers could use it as reference.

Shelf Life

The shelf life is related to many factors, storage state, buffer ingredients, storage temperature and the stability of the protein itself. Generally, the shelf life of liquid form is 6 months at -20°C/-80°C. The shelf life of lyophilized form is 12 months at -20°C/-80°C.