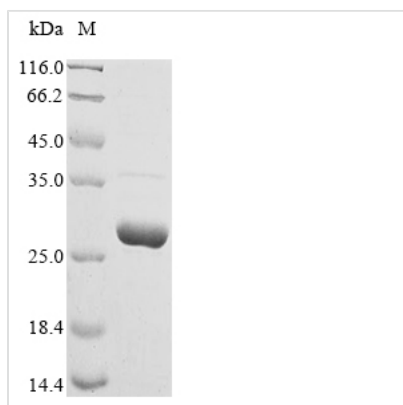




Recombinant Human Chorionic somatomammotropin hormone (CSH1), Escherichia Coli

| | |
|--------------------------|---|
| Product Code | CSB-EP006053HU |
| Abbreviation | Recombinant Human CSH1 protein |
| Storage | The shelf life is related to many factors, storage state, buffer ingredients, storage temperature and the stability of the protein itself. Generally, the shelf life of liquid form is 6 months at -20°C/-80°C. The shelf life of lyophilized form is 12 months at -20°C/-80°C. |
| Uniprot No. | P01243 |
| Product Type | Recombinant Proteins |
| Immunogen Species | Homo sapiens (Human) |
| Purity | >85% (SDS-PAGE) |
| Sequence | VQTV PLSRLFDHAM LQAHRAHQLA IDTYQEFEET YIPKDQKYSF LHDSQTSFCF SDIPTPSNM EETQQKSNLE LLRISLLIE SWLEPVRFLR SMFANNLVYD TSDSDDYHLL KDLEEGIQTL MGRLEDGSRR TGQILKQTYS KFDTNSHNHD ALLKNYGLLY CFRKDMDKVE TFLRMVQCRS VEGSCGF |
| Source | E.coli |
| Target Names | CSH1 |
| Protein Names | Recommended name: Chorionic somatomammotropin hormone Short name= Choriomammotropin Alternative name(s): Lactogen Placental lactogen Short name= PL |
| Expression Region | 27-217 |
| Notes | Repeated freezing and thawing is not recommended. Store working aliquots at 4°C for up to one week. |
| Tag Info | N-terminal His-tagged and C-terminal Myc-tagged N-terminal His-SUMO-tagged and C-terminal Myc-tagged N-terminal His-B2M-tagged and C-terminal Myc-tagged N-terminal His-GST-tagged and C-terminal Myc-tagged N-terminal His-tagged N-terminal His-SUMO-tagged N-terminal His-B2M-tagged N-terminal His-GST-tagged N-terminal GST-tagged Tag-Free |
| Protein Length | Full Length of Mature Protein |
| Image | |



(Tris-Glycine gel) Discontinuous SDS-PAGE (reduced) with 5% enrichment gel and 15% separation gel.

Shelf Life

The shelf life is related to many factors, storage state, buffer ingredients, storage temperature and the stability of the protein itself. Generally, the shelf life of liquid form is 6 months at -20°C/-80°C. The shelf life of lyophilized form is 12 months at -20°C/-80°C.