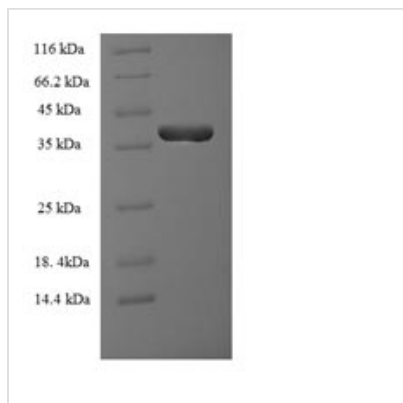




Recombinant Human Granulocyte-macrophage colony-stimulating factor (CSF2)

Product Code	CSB-EP006045HUe0
Relevance	Cytokine that stimulates the growth and differentiation of hatopoietic precursor cells from various lineages, including granulocytes, macrophages, eosinophils and erythrocytes.
Abbreviation	Recombinant Human CSF2 protein
Storage	The shelf life is related to many factors, storage state, buffer ingredients, storage temperature and the stability of the protein itself. Generally, the shelf life of liquid form is 6 months at -20°C/-80°C. The shelf life of lyophilized form is 12 months at -20°C/-80°C.
Uniprot No.	P04141
Alias	Colony-stimulating factor ;CSFMolgramostin;Sargramostim
Product Type	Recombinant Protein
Immunogen Species	Homo sapiens (Human)
Purity	Greater than 90% as determined by SDS-PAGE.
Sequence	APARSPSPSTQPWEHVNAIQEARRLLNLSRDTAAEMNETVEVISEMFDLQEPT CLQTRLELYKQGLRGLTKLKGPLTMMASHYKQHCPPTPETSCATQIITFESFK ENLKDFLLVIPFDCWEPVQE
Research Area	Immunology
Source	E.coli
Target Names	CSF2
Expression Region	18-144aa
Notes	Repeated freezing and thawing is not recommended. Store working aliquots at 4°C for up to one week.
Tag Info	N-terminal GST-tagged
Mol. Weight	41.5kDa
Protein Length	Full Length of Mature Protein
Image	



(Tris-Glycine gel) Discontinuous SDS-PAGE (reduced) with 5% enrichment gel and 15% separation gel.

Reconstitution

We recommend that this vial be briefly centrifuged prior to opening to bring the contents to the bottom. Please reconstitute protein in deionized sterile water to a concentration of 0.1-1.0 mg/mL. We recommend to add 5-50% of glycerol (final concentration) and aliquot for long-term storage at -20°C/-80°C. Our default final concentration of glycerol is 50%. Customers could use it as reference.

Shelf Life

The shelf life is related to many factors, storage state, buffer ingredients, storage temperature and the stability of the protein itself. Generally, the shelf life of liquid form is 6 months at -20°C/-80°C. The shelf life of lyophilized form is 12 months at -20°C/-80°C.