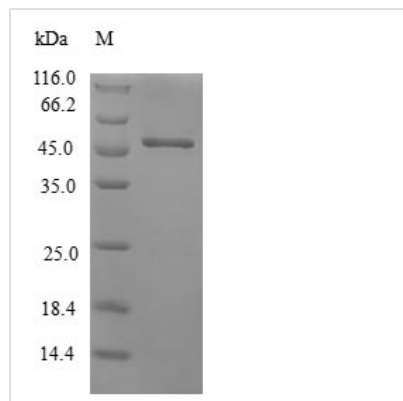




Recombinant Human Beta-crystallin S (CRYGS)

Product Code	CSB-EP006025HU
Relevance	Crystallins are the dominant structural components of the vertebrate eye lens.
Abbreviation	Recombinant Human CRYGS protein
Storage	The shelf life is related to many factors, storage state, buffer ingredients, storage temperature and the stability of the protein itself. Generally, the shelf life of liquid form is 6 months at -20°C/-80°C. The shelf life of lyophilized form is 12 months at -20°C/-80°C.
Uniprot No.	P22914
Alias	Gamma-S-crystallin Gamma-crystallin S
Product Type	Recombinant Protein
Immunogen Species	Homo sapiens (Human)
Purity	Greater than 90% as determined by SDS-PAGE.
Sequence	SKTGTKITFYEDKNFQGRRYDCDCDCADFHTYLSRCNSIKVEGGTWAVYERP NFAGYMYILPQGEYPEYQRWMGLNDRLLSSCRAVHLPSGGQYKIQIFEKGDFS GQMYETTEDCPSIMEQFHMREIHSCKVLEGVWIFYELPNYRGRQYLLDKKEYR KPIDWGAASPAVQSFRIVE
Source	E.coli
Target Names	CRYGS
Protein Names	Recommended name: Beta-crystallin S Alternative name(s): Gamma-S-crystallin Gamma-crystallin S
Expression Region	2-178aa
Notes	Repeated freezing and thawing is not recommended. Store working aliquots at 4°C for up to one week.
Tag Info	N-terminal GST-tagged
Mol. Weight	47.9kDa
Protein Length	Full Length of Mature Protein

Image



(Tris-Glycine gel) Discontinuous SDS-PAGE (reduced) with 5% enrichment gel and 15% separation gel.



Reconstitution

We recommend that this vial be briefly centrifuged prior to opening to bring the contents to the bottom. Please reconstitute protein in deionized sterile water to a concentration of 0.1-1.0 mg/mL. We recommend to add 5-50% of glycerol (final concentration) and aliquot for long-term storage at -20°C/-80°C. Our default final concentration of glycerol is 50%. Customers could use it as reference.

Shelf Life

The shelf life is related to many factors, storage state, buffer ingredients, storage temperature and the stability of the protein itself. Generally, the shelf life of liquid form is 6 months at -20°C/-80°C. The shelf life of lyophilized form is 12 months at -20°C/-80°C.