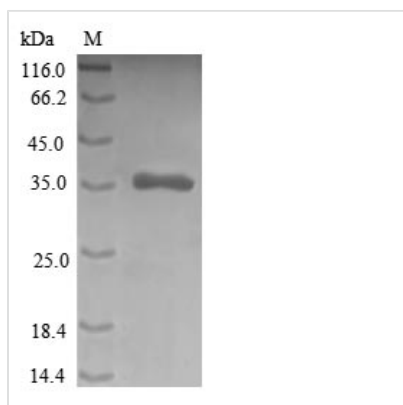




Recombinant Human Cysteine-rich protein 1 (CRIP1), partial

Product Code	CSB-EP005969HU
Relevance	Seems to have a role in zinc absorption and may function as an intracellular zinc transport protein.
Abbreviation	Recombinant Human CRIP1 protein, partial
Storage	The shelf life is related to many factors, storage state, buffer ingredients, storage temperature and the stability of the protein itself. Generally, the shelf life of liquid form is 6 months at -20°C/-80°C. The shelf life of lyophilized form is 12 months at -20°C/-80°C.
Uniprot No.	P50238
Product Type	Recombinant Proteins
Immunogen Species	Homo sapiens (Human)
Purity	Greater than 90% as determined by SDS-PAGE.
Sequence	PKCPKCNKEVYFAERVTSLGKDWHRPCLKCEKCGKTLTSGGHAEHEGKPYC NHPCYAAMFGPKGFGGRGGAESHTFK
Research Area	Signal Transduction
Source	E.coli
Target Names	CRIP1
Protein Names	Recommended name: Cysteine-rich protein 1 Short name= CRP-1Alternative name(s): Cysteine-rich heart protein Short name= CRHP Short name= hCRHP Cysteine-rich intestinal protein Short name= CRIP
Expression Region	2-77aa
Notes	Repeated freezing and thawing is not recommended. Store working aliquots at 4°C for up to one week.
Tag Info	N-terminal GST-tagged
Mol. Weight	35.4kDa
Protein Length	Partial
Image	



(Tris-Glycine gel) Discontinuous SDS-PAGE (reduced) with 5% enrichment gel and 15% separation gel.

Shelf Life

The shelf life is related to many factors, storage state, buffer ingredients, storage temperature and the stability of the protein itself. Generally, the shelf life of liquid form is 6 months at -20°C/-80°C. The shelf life of lyophilized form is 12 months at -20°C/-80°C.