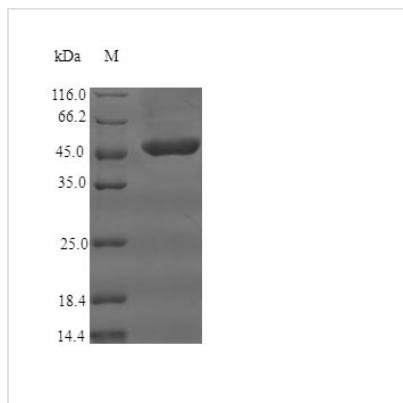


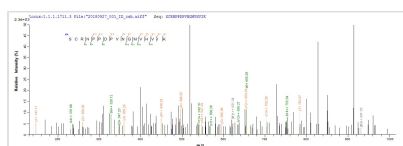


Recombinant Human Complement receptor type 1 (CR1), partial

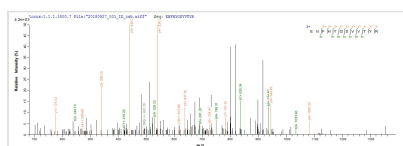
Product Code	CSB-EP005932HU
Relevance	Mediates cellular binding of particles and immune complexes that have activated complement.(Microbial infection) Acts as a receptor for Epstein-Barr virus.
Abbreviation	Recombinant Human CR1 protein, partial
Storage	The shelf life is related to many factors, storage state, buffer ingredients, storage temperature and the stability of the protein itself. Generally, the shelf life of liquid form is 6 months at -20°C/-80°C. The shelf life of lyophilized form is 12 months at -20°C/-80°C.
Uniprot No.	P17927
Alias	C3b/C4b receptor CD_antigen: CD35
Product Type	Recombinant Protein
Immunogen Species	Homo sapiens (Human)
Purity	Greater than 90% as determined by SDS-PAGE.
Sequence	GQCNAPEWLFPARPTNLTDEFEFPIGTYLNYECRPGYSGRPFSIICLKNSVWT GAKDRCRRKSCRNPPDPVNGMVHVIKGIQFGSQIKYSCTKGYRLIGSSSATCII SGDTVIWDNETPICDRIPCGLPPTITNGDFISTNRENFHYGSVVTYRCNPGSGG RKVFELVGEPsiYCTSNDDQVGIWSGPAPQCII
Source	E.coli
Target Names	CR1
Expression Region	41-234aa
Notes	Repeated freezing and thawing is not recommended. Store working aliquots at 4°C for up to one week.
Tag Info	N-terminal GST-tagged
Mol. Weight	48.4kDa
Protein Length	Partial
Image	



(Tris-Glycine gel) Discontinuous SDS-PAGE (reduced) with 5% enrichment gel and 15% separation gel.



Based on the SEQUEST from database of E.coli host and target protein, the LC-MS/MS Analysis result of CSB-EP005932HU could indicate that this peptide derived from E.coli-expressed Homo sapiens (Human) CR1.



Based on the SEQUEST from database of E.coli host and target protein, the LC-MS/MS Analysis result of CSB-EP005932HU could indicate that this peptide derived from E.coli-expressed Homo sapiens (Human) CR1.

Reconstitution

We recommend that this vial be briefly centrifuged prior to opening to bring the contents to the bottom. Please reconstitute protein in deionized sterile water to a concentration of 0.1-1.0 mg/mL. We recommend to add 5-50% of glycerol (final concentration) and aliquot for long-term storage at -20°C/-80°C. Our default final concentration of glycerol is 50%. Customers could use it as reference.

Shelf Life

The shelf life is related to many factors, storage state, buffer ingredients, storage temperature and the stability of the protein itself.

Generally, the shelf life of liquid form is 6 months at -20°C/-80°C. The shelf life of lyophilized form is 12 months at -20°C/-80°C.