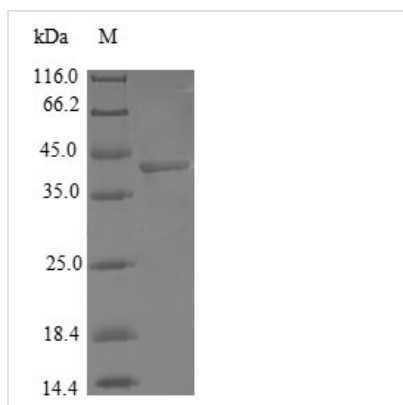




# Recombinant Human Cytochrome c oxidase subunit 7A-related protein, mitochondrial (COX7A2L)

<b>Product Code</b>	CSB-EP005862HU
<b>Relevance</b>	Involved in the regulation of oxidative phosphorylation and energy metabolism. Necessary for the assembly of mitochondrial respiratory supercomplex
<b>Abbreviation</b>	Recombinant Human COX7A2L protein
<b>Storage</b>	The shelf life is related to many factors, storage state, buffer ingredients, storage temperature and the stability of the protein itself. Generally, the shelf life of liquid form is 6 months at -20°C/-80°C. The shelf life of lyophilized form is 12 months at -20°C/-80°C.
<b>Uniprot No.</b>	O14548
<b>Alias</b>	COX7a-related protein Cytochrome c oxidase subunit VIIa-related protein EB1
<b>Product Type</b>	Recombinant Protein
<b>Immunogen Species</b>	Homo sapiens (Human)
<b>Purity</b>	Greater than 90% as determined by SDS-PAGE.
<b>Sequence</b>	MYKFKSGFTQKLAGAWASEAYSPQGLKPVVSTEAPPIIFATPTKLTSDSTVYDY AGKNKVPPELQKFFQKADGVPVYLKRGLPDQMLYRTTMALTVGGTIYCLIALYM ASQPKNK
<b>Research Area</b>	Signal Transduction
<b>Source</b>	E.coli
<b>Target Names</b>	COX7A2L
<b>Protein Names</b>	Recommended name: Cytochrome c oxidase subunit 7A-related protein, mitochondrial Alternative name(s): COX7a-related protein Cytochrome c oxidase subunit VIIa-related protein EB1
<b>Expression Region</b>	1-114aa
<b>Notes</b>	Repeated freezing and thawing is not recommended. Store working aliquots at 4°C for up to one week.
<b>Tag Info</b>	N-terminal GST-tagged
<b>Mol. Weight</b>	39.6kDa
<b>Protein Length</b>	Full Length
<b>Image</b>	



(Tris-Glycine gel) Discontinuous SDS-PAGE (reduced) with 5% enrichment gel and 15% separation gel.

### Reconstitution

We recommend that this vial be briefly centrifuged prior to opening to bring the contents to the bottom. Please reconstitute protein in deionized sterile water to a concentration of 0.1-1.0 mg/mL. We recommend to add 5-50% of glycerol (final concentration) and aliquot for long-term storage at -20°C/-80°C. Our default final concentration of glycerol is 50%. Customers could use it as reference.

### Shelf Life

The shelf life is related to many factors, storage state, buffer ingredients, storage temperature and the stability of the protein itself. Generally, the shelf life of liquid form is 6 months at -20°C/-80°C. The shelf life of lyophilized form is 12 months at -20°C/-80°C.