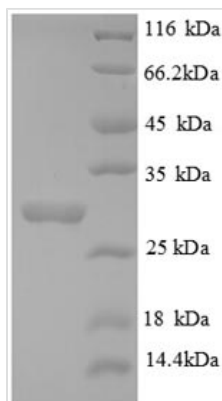




Recombinant Human Collagen alpha-3 (IV) chain (COL4A3), partial

Product Code	CSB-EP005743HU
Relevance	Type IV collagen is the major structural component of glomerular basement membranes (GBM), forming a 'chicken-wire' meshwork together with laminins, proteoglycans and entactin/nidogen. Tumstatin, a cleavage fragment corresponding to the collagen alpha 3(IV) NC1 domain, possesses both anti-angiogenic and anti-tumor cell activity; these two anti-tumor properties may be regulated via RGD-independent ITGB3-mediated mechanisms.
Abbreviation	Recombinant Human COL4A3 protein, partial
Storage	The shelf life is related to many factors, storage state, buffer ingredients, storage temperature and the stability of the protein itself. Generally, the shelf life of liquid form is 6 months at -20°C/-80°C. The shelf life of lyophilized form is 12 months at -20°C/-80°C.
Uniprot No.	Q01955
Alias	Goodpasture antigen
Product Type	Recombinant Protein
Immunogen Species	Homo sapiens (Human)
Purity	Greater than 90% as determined by SDS-PAGE.
Sequence	GLKGKRGDSGSPATWTTRGFVTRHSQTTAIPSCPEGTVPLYSGFSFLFVQG NQRAHGQDLGTLGSLQRFTTMPFLFCNVNDVCNFASTRNDYSYWLSTPALM PMNMAPITGRALEPYISRCTVCEGPAIAIAVHSQTDDIPPCPHGWISLWKGFSEI MFTSAGSEGTGQALASPGSCLEEFRAFPFLECHGRGTCNYYSNSYSFWLASL NPERMFRKPISTVKAGELEKIISRCQVCMKK
Research Area	Cell Adhesion
Source	E.coli
Target Names	COL4A3
Expression Region	1427-1668aa
Notes	Repeated freezing and thawing is not recommended. Store working aliquots at 4°C for up to one week.
Tag Info	N-terminal 6xHis-tagged
Mol. Weight	30.6 kDa
Protein Length	Partial
Image	



(Tris-Glycine gel) Discontinuous SDS-PAGE (reduced) with 5% enrichment gel and 15% separation gel.

Reconstitution

We recommend that this vial be briefly centrifuged prior to opening to bring the contents to the bottom. Please reconstitute protein in deionized sterile water to a concentration of 0.1-1.0 mg/mL. We recommend to add 5-50% of glycerol (final concentration) and aliquot for long-term storage at -20°C/-80°C. Our default final concentration of glycerol is 50%. Customers could use it as reference.

Shelf Life

The shelf life is related to many factors, storage state, buffer ingredients, storage temperature and the stability of the protein itself. Generally, the shelf life of liquid form is 6 months at -20°C/-80°C. The shelf life of lyophilized form is 12 months at -20°C/-80°C.