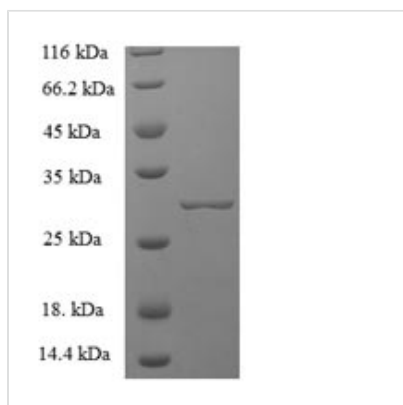




Recombinant Mouse Chymase (Cma1), partial

Product Code	CSB-EP005599MO
Relevance	Major secreted protease of mast cells with suspected roles in vasoactive peptide generation, Extracellular domain matrix degradation, and regulation of gland secretion.
Abbreviation	Recombinant Mouse Cma1 protein, partial
Storage	The shelf life is related to many factors, storage state, buffer ingredients, storage temperature and the stability of the protein itself. Generally, the shelf life of liquid form is 6 months at -20°C/-80°C. The shelf life of lyophilized form is 12 months at -20°C/-80°C.
Uniprot No.	P21844
Product Type	Recombinant Proteins
Immunogen Species	Mus musculus (Mouse)
Purity	Greater than 90% as determined by SDS-PAGE.
Sequence	IIGGTECIPHSRPY MAYLEIVTSEN YLSACSGFLIRNFVLTA AHCAGRSITVLLG AHNKTSKEDTWQKLEVEKQFLHPKYDENLVVHDIMLLKLKEKAKLTLGVGTLPL SANFNFIPPGRMCRAVGWGR TNVNEPASDTLQEVK MRLQEPQACKHFTSFR HNSQLCVGNPKKM QNVYKGDSGGPLL CAGIAQGIASYVHRNAKPPAVFTRISH YRPWINKILRE
Source	E.coli
Target Names	Cma1
Expression Region	22-246aa
Notes	Repeated freezing and thawing is not recommended. Store working aliquots at 4°C for up to one week.
Tag Info	N-terminal 6xHis-tagged
Mol. Weight	29.2kDa
Protein Length	Partial

Image



(Tris-Glycine gel) Discontinuous SDS-PAGE (reduced) with 5% enrichment gel and 15% separation gel.



Shelf Life

The shelf life is related to many factors, storage state, buffer ingredients, storage temperature and the stability of the protein itself.

Generally, the shelf life of liquid form is 6 months at -20°C/-80°C. The shelf life of lyophilized form is 12 months at -20°C/-80°C.