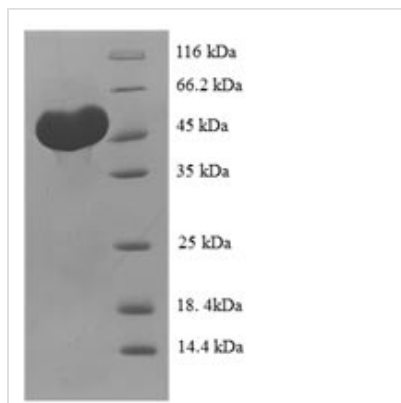




Recombinant Human C-type lectin domain family 18 member A (CLEC18A)

Product Code	CSB-EP005521HU
Abbreviation	Recombinant Human CLEC18A protein
Storage	The shelf life is related to many factors, storage state, buffer ingredients, storage temperature and the stability of the protein itself. Generally, the shelf life of liquid form is 6 months at -20°C/-80°C. The shelf life of lyophilized form is 12 months at -20°C/-80°C.
Uniprot No.	A5D8T8
Alias	Mannose receptor-like protein 2
Product Type	Recombinant Protein
Immunogen Species	Homo sapiens (Human)
Purity	Greater than 90% as determined by SDS-PAGE.
Sequence	EVWPPQLQEQAPMAGALNRKESFLLLSLHNRLRSWVQPPAADMRRLDWSDS LAQLAQARAALCGTPTPSLASGLWRTLQVGWNMQLLPAGLVSFVEVSLWFA EGQRYSHAAGECARNATCTHYTQLVWATSSQLGCGRHLCSAGQAAIEAFVC AYSPRGNWEVNGKTIVPYKKGAWCSLCTASVSGCFKAWDHAGGLCEVPRNP CRMSCQNHGRLNISTCHCHCPPGYTGRCYQVRCSLQCVHGRFREEECSCVC DIGYGGAQCATKVHFPFHTCDLRIDGDCFMVSSEADTYRARMKCQRKGGVL AQIKSQKVQDILAFYLGRLETTNEVIDSDFETRNFWIGLTYKTAKDSFRWATGE HQAFTSFAFGQPDNHGFGNCVELQASAAFNWWDQRCKTRNRYICQFAQEHIS RWGPGS
Research Area	Others
Source	E.coli
Target Names	CLEC18A
Expression Region	27-446aa
Notes	Repeated freezing and thawing is not recommended. Store working aliquots at 4°C for up to one week.
Tag Info	N-terminal 6xHis-SUMO-tagged
Mol. Weight	62.9kDa
Protein Length	Full Length of Mature Protein
Image	



(Tris-Glycine gel) Discontinuous SDS-PAGE (reduced) with 5% enrichment gel and 15% separation gel.

Description

The recombinant Human CLEC18A was expressed with the amino acid range of 27-446. The theoretical molecular weight of the CLEC18A protein is 62.9 kDa. This CLEC18A recombinant protein is manufactured in e.coli. The CLEC18A gene fragment has been modified by fusing the N-terminal 6xHis-SUMO tag, providing convenience in detecting and purifying the recombinant CLEC18A protein during the following stages.

Human C-type lectin domain family 18 member A (CLEC18A) is a secretory protein that is most highly expressed in human myeloid cells and the liver. Studies have shown that CLEC18A functions as a TLR3 coreceptor, suggesting its potential role in enhancing host immune responses to viral infections. There is evidence indicating that plasma CLEC18A levels exhibit a correlation with the stage of HBV infection, suggesting its potential utility as a biomarker for predicting patient outcomes. Studies have revealed a significant association between CLEC18A and HCV infection, particularly in cases of HCV-associated mixed cryoglobulinemia (MC).

Reconstitution

We recommend that this vial be briefly centrifuged prior to opening to bring the contents to the bottom. Please reconstitute protein in deionized sterile water to a concentration of 0.1-1.0 mg/mL. We recommend to add 5-50% of glycerol (final concentration) and aliquot for long-term storage at -20°C/-80°C. Our default final concentration of glycerol is 50%. Customers could use it as reference.

Shelf Life

The shelf life is related to many factors, storage state, buffer ingredients, storage temperature and the stability of the protein itself. Generally, the shelf life of liquid form is 6 months at -20°C/-80°C. The shelf life of lyophilized form is 12 months at -20°C/-80°C.