



# Recombinant Human Rab proteins geranylgeranyltransferase component A 1 (CHM)

<b>Product Code</b>	CSB-EP005356HU
<b>Relevance</b>	Substrate-binding subunit of the Rab geranylgeranyltransferase (GGTase) complex. Binds unprenylated Rab proteins and presents the substrate peptide to the catalytic component B composed of RABGGTA and RABGGTB, and remains bound to it after the geranylgeranyl transfer reaction. The component A is thought to be regenerated by transferring its prenylated Rab back to the donor membrane. Besides, a pre-formed complex consisting of CHM and the Rab GGTase dimer (RGGT or component B) can bind to and prenylate Rab proteins; this alternative pathway is proposed to be the predominant pathway for Rab protein geranylgeranylation.
<b>Abbreviation</b>	Recombinant Human CHM protein
<b>Storage</b>	The shelf life is related to many factors, storage state, buffer ingredients, storage temperature and the stability of the protein itself. Generally, the shelf life of liquid form is 6 months at -20°C/-80°C. The shelf life of lyophilized form is 12 months at -20°C/-80°C.
<b>Uniprot No.</b>	P24386
<b>Alias</b>	Choroideremia protein Rab escort protein 1 Short name:REP-1 TCD protein
<b>Product Type</b>	Recombinant Protein
<b>Immunogen Species</b>	Homo sapiens (Human)
<b>Purity</b>	Greater than 90% as determined by SDS-PAGE.
<b>Sequence</b>	MADTLPSEFDVIVIGTGLPESIIAAACSRSGRRVLHVDSRSYYGGNWASFSG LLSWLKEYQENSIVSDSPVWQDQILENEEAIALSRKDKTIQHVEVFCYASQDL HEDVEEAGALQKNHALVTSANSTEAADSAFLPTEDESLSTMSCMLTEQTPSS DPENALEVNGAEVTGEKENHCDDKTCVPSTSAEDMSENVPIAEDTTEQPKKN RITYSQIIKEGRRFNIDLVSKLLYSRGLLIDLLIKSNVSRYAIEFKNITRILAFREGRV EQVPCSRADVFNKQLTMVEKRMLMKFLTFCMEYEKYPDEYKGYEIEITFYEYL KTQKLTPNLQYIVMHSIAMTSETASSTIDGLKATKNFLHCLGRYGNTPLFLPLY GGGELPQCFCRMCAVFGGIYCLRHSVQCLVVDKESRKCKAIDQFGQRIISEHF LVEDSYFPENMCSRQYRQISRAVLITDRSVLKTDSQDQISILTVPAEETGTF VRVIELCSSTMTCMKGTYLVLHLCCTSSKTAREDLSEVQKLFVPTYEMEIEENEQ VEKPRILWALYFNMRDSSDISRSCYNDLPSNVYVCSGPDCGLGNDNAVKQAE TLFQEICPNEDFCPPPPNPEDIILDGDSLQPEASESSAIEANSETFKESTNLGN LEESSE
<b>Research Area</b>	Neuroscience
<b>Source</b>	E.coli
<b>Target Names</b>	CHM
<b>Expression Region</b>	1-653aa



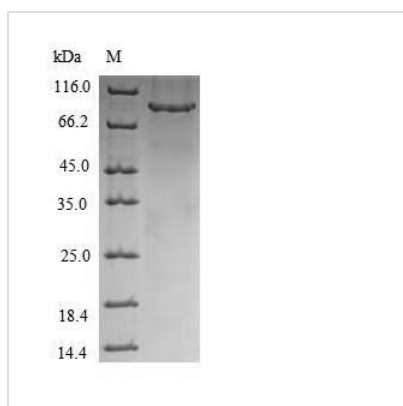
**Notes** Repeated freezing and thawing is not recommended. Store working aliquots at 4°C for up to one week.

**Tag Info** N-terminal 6xHis-tagged

**Mol. Weight** 77.5kDa

**Protein Length** Full Length

**Image**



(Tris-Glycine gel) Discontinuous SDS-PAGE (reduced) with 5% enrichment gel and 15% separation gel.

**Reconstitution** We recommend that this vial be briefly centrifuged prior to opening to bring the contents to the bottom. Please reconstitute protein in deionized sterile water to a concentration of 0.1-1.0 mg/mL. We recommend to add 5-50% of glycerol (final concentration) and aliquot for long-term storage at -20°C/-80°C. Our default final concentration of glycerol is 50%. Customers could use it as reference.

**Shelf Life** The shelf life is related to many factors, storage state, buffer ingredients, storage temperature and the stability of the protein itself. Generally, the shelf life of liquid form is 6 months at -20°C/-80°C. The shelf life of lyophilized form is 12 months at -20°C/-80°C.