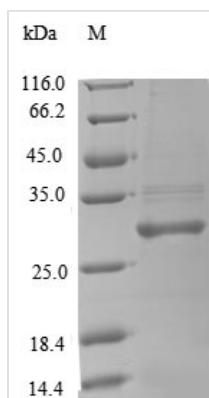




Recombinant Rat Complement factor D (Cfd)

| | |
|--------------------------|---|
| Product Code | CSB-EP005271RA |
| Relevance | Factor D cleaves factor B when the latter is complexed with factor C3b, activating the C3bbb complex, which then becomes the C3 convertase of the alternate pathway. Its function is homologous to that of C1s in the classical pathway. |
| Abbreviation | Recombinant Rat Cfd protein |
| Storage | The shelf life is related to many factors, storage state, buffer ingredients, storage temperature and the stability of the protein itself. Generally, the shelf life of liquid form is 6 months at -20°C/-80°C. The shelf life of lyophilized form is 12 months at -20°C/-80°C. |
| Uniprot No. | P32038 |
| Alias | Adipsin C3 convertase activator Endogenous vascular elastase Properdin factor D |
| Product Type | Recombinant Protein |
| Immunogen Species | Rattus norvegicus (Rat) |
| Purity | Greater than 90% as determined by SDS-PAGE. |
| Sequence | ILGGQEAMAHARPYMASVQVNGTHVCGGTLVDEQWVLSAAHCMDGVTKDEV VQVLLGAHSLSSPEPYKHLVDVQSVVLHPGSRPDSVEDDLMLFKLSHNASLGP HVRPLPLQREDREVKPGTLCDVAGWGVVTHAGRRPDVLQQLTVSIMDRNTC NLRTYHDGAITKNMMCAESNRRDTCRGDSGGPLVCGDAVEAVVTWGSRVCG NRRKPGVFTRVATYVPWIENVLSGNVSVNVTA |
| Research Area | Immunology |
| Source | E.coli |
| Target Names | Cfd |
| Protein Names | Recommended name: Complement factor D EC= 3.4.21.46 Alternative name(s): Adipsin C3 convertase activator Endogenous vascular elastase Properdin factor D |
| Expression Region | 26-263aa |
| Notes | Repeated freezing and thawing is not recommended. Store working aliquots at 4°C for up to one week. |
| Tag Info | N-terminal 10xHis-tagged and C-terminal Myc-tagged |
| Mol. Weight | 30.8kDa |
| Protein Length | Full Length of Mature Protein |
| Image | |



(Tris-Glycine gel) Discontinuous SDS-PAGE (reduced) with 5% enrichment gel and 15% separation gel.

Reconstitution

We recommend that this vial be briefly centrifuged prior to opening to bring the contents to the bottom. Please reconstitute protein in deionized sterile water to a concentration of 0.1-1.0 mg/mL. We recommend to add 5-50% of glycerol (final concentration) and aliquot for long-term storage at -20°C/-80°C. Our default final concentration of glycerol is 50%. Customers could use it as reference.

Shelf Life

The shelf life is related to many factors, storage state, buffer ingredients, storage temperature and the stability of the protein itself. Generally, the shelf life of liquid form is 6 months at -20°C/-80°C. The shelf life of lyophilized form is 12 months at -20°C/-80°C.