

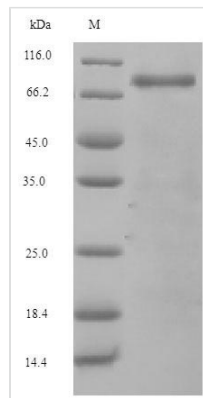


Recombinant Mouse Complement factor B (Cfb)

Product Code	CSB-EP005268MO
Relevance	Factor B which is part of the alternate pathway of the complement system is cleaved by factor D into 2 fragments: Ba and Bb. Bb, a serine protease, then combines with complement factor 3b to generate the C3 or C5 convertase. It has also been implicated in proliferation and differentiation of preactivated B-lymphocytes, rapid spreading of peripheral blood monocytes, stimulation of lymphocyte blastogenesis and lysis of erythrocytes. Ba inhibits the proliferation of preactivated B-lymphocytes.
Abbreviation	Recombinant Mouse Cfb protein
Storage	The shelf life is related to many factors, storage state, buffer ingredients, storage temperature and the stability of the protein itself. Generally, the shelf life of liquid form is 6 months at -20°C/-80°C. The shelf life of lyophilized form is 12 months at -20°C/-80°C.
Uniprot No.	P04186
Alias	C3/C5 convertase Glycine-rich beta glycoprotein ;GBGPBF2;Properdin factor B
Product Type	Recombinant Protein
Immunogen Species	Mus musculus (Mouse)
Purity	Greater than 90% as determined by SDS-PAGE.
Sequence	TPVLEARPQVSCSLEGVEIKGGSFQLLQGGQALEYLCPSGFYPYPVQTRTCRS TGSWSDLQTRDQKIVQKAECRAIRCPRPQDFENGFWPRSPFYNLSDQISFQ CYDGYVLRGSANRTCQENGRWDGQTAICDDGAGYCPNPGIPIGTRKVGSGY RLEDIVTYHCSRGLVLRGSQKRKCQEGGSWSGTEPSCQDSFMYDSPQEVAE AFLSSLTETIEGADAEDGHSPGEQQKRKIVLDPSGSMNIYLVLDGSDSIGSSNF TGAKRCLTNLIEKVASYGVRPRYGLLTATVPKVLVRVSDERSSDADWVTEKL NQISYEDHKLKSGTNTKRALQAVYSMMSWAGDAPPEGWNRTRHVIIMTDGL HNMGGNPVTVIQDIRALLDIGRDPKNPREYLDVYVFGVGPLVDSVNINALASK KDNEHHVFKVKDMEDLENVYQMIDETSLSLCGMVWEHKKGNDYHKQPWQ AKISVTRPLKGHETCMGAVVSEYFVLTAHCFMVDDQKHSIKVSVGGQRRDLE IEEVLFHPKYNINGKKAEGIPEFYDYDVALVKLNKLKYGQTLRPICLPCTEGTT RALRLPQTATCKQHKEQLLPVKDVKALFVSEQGKSLTRKEVYIKNGDKKASCE RDATAQGYEKVKDASEVVTFRFLCTGGVDPYADPNTCKGDSGGPLIVHKRS RFIQVGVISWGVVDVCRDQRRQQLVPSYARDFHINLFQVLPWLKDKLKDEDLGL FL
Research Area	Others
Source	E.coli
Target Names	Cfb
Expression Region	23-761aa
Notes	Repeated freezing and thawing is not recommended. Store working aliquots at 4°C for up to one week.



Tag Info	N-terminal 6xHis-tagged
Mol. Weight	87.0kDa
Protein Length	Full Length of Mature Protein

Image


(Tris-Glycine gel) Discontinuous SDS-PAGE (reduced) with 5% enrichment gel and 15% separation gel.

Description

Power your immunological research with our Recombinant Mouse Cfb, also known as Complement factor B. This protein, produced in E.coli, opens a gateway to in-depth exploration of immune system dynamics, particularly the complement system.

Our Complement factor B is a full-length mature protein (23-761aa), providing a complete representation of the protein's function and structure. Expressed with a N-terminal 6xHis-tag, it ensures optimal stability and efficient purification. With a purity of over 90% as determined by SDS-PAGE, our Recombinant Mouse Cfb meets the rigorous standards required for scientific exploration. Choose between a liquid form for ready-to-use convenience or a lyophilized powder for long-term storage, aligning with your research workflow.

Reconstitution

We recommend that this vial be briefly centrifuged prior to opening to bring the contents to the bottom. Please reconstitute protein in deionized sterile water to a concentration of 0.1-1.0 mg/mL. We recommend to add 5-50% of glycerol (final concentration) and aliquot for long-term storage at -20°C/-80°C. Our default final concentration of glycerol is 50%. Customers could use it as reference.

Shelf Life

The shelf life is related to many factors, storage state, buffer ingredients, storage temperature and the stability of the protein itself. Generally, the shelf life of liquid form is 6 months at -20°C/-80°C. The shelf life of lyophilized form is 12 months at -20°C/-80°C.