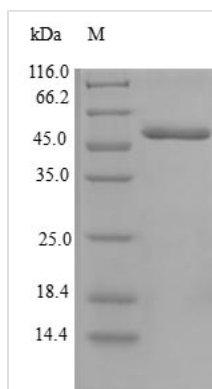




# Recombinant Human Centromere protein H (CENPH)

<b>Product Code</b>	CSB-EP005211HU
<b>Relevance</b>	Component of the CENPA-NAC (nucleosome-associated) complex, a complex that plays a central role in assembly of kinetochore proteins, mitotic progression and chromosome segregation. The CENPA-NAC complex recruits the CENPA-CAD (nucleosome distal) complex and may be involved in incorporation of newly synthesized CENPA into centromeres. Required for chromosome congression and efficiently align the chromosomes on a metaphase plate.
<b>Abbreviation</b>	Recombinant Human CENPH protein
<b>Storage</b>	The shelf life is related to many factors, storage state, buffer ingredients, storage temperature and the stability of the protein itself. Generally, the shelf life of liquid form is 6 months at -20°C/-80°C. The shelf life of lyophilized form is 12 months at -20°C/-80°C.
<b>Uniprot No.</b>	Q9H3R5
<b>Alias</b>	Interphase centromere complex protein 35
<b>Product Type</b>	Recombinant Protein
<b>Immunogen Species</b>	Homo sapiens (Human)
<b>Purity</b>	Greater than 90% as determined by SDS-PAGE.
<b>Sequence</b>	MEEQPQMQDADEPADSGGEGRAGGPPQVAGAAACSEDRMTLLRLRAQT KQQLLEYKSMVDASEEKTPEQIMQEKGIEAKIEDLENEIEEVKVAFEIKKLALDR MRLSTALKKNLEKISRQSSVLMDNMKHLLELNKLIMKSQQESWDLEEKLLDIRK KRLQLKQASESKLLEIQTEKNKQKIDLDMSENSERIKIIRQNLQMEIKITTVIQHV FQNLILGSKVNWAEDPALKEIVLQLEKNVDMM
<b>Research Area</b>	Epigenetics and Nuclear Signaling
<b>Source</b>	E.coli
<b>Target Names</b>	CENPH
<b>Protein Names</b>	Recommended name: Centromere protein H Short name= CENP-H Alternative name(s): Interphase centromere complex protein 35
<b>Expression Region</b>	1-247aa
<b>Notes</b>	Repeated freezing and thawing is not recommended. Store working aliquots at 4°C for up to one week.
<b>Tag Info</b>	N-terminal GST-tagged
<b>Mol. Weight</b>	55.5kDa
<b>Protein Length</b>	Full Length
<b>Image</b>	



(Tris-Glycine gel) Discontinuous SDS-PAGE (reduced) with 5% enrichment gel and 15% separation gel.

### Reconstitution

We recommend that this vial be briefly centrifuged prior to opening to bring the contents to the bottom. Please reconstitute protein in deionized sterile water to a concentration of 0.1-1.0 mg/mL. We recommend to add 5-50% of glycerol (final concentration) and aliquot for long-term storage at -20°C/-80°C. Our default final concentration of glycerol is 50%. Customers could use it as reference.

### Shelf Life

The shelf life is related to many factors, storage state, buffer ingredients, storage temperature and the stability of the protein itself. Generally, the shelf life of liquid form is 6 months at -20°C/-80°C. The shelf life of lyophilized form is 12 months at -20°C/-80°C.